



*Jefferson
Barnetts
Lawrence*



Made in Germany



This is a portion of the famous Boston Eagle, Star & Thunderbolt cancel. A 2¢ green entire with complete cancel sold for \$175.00 in the 1962 sale of the Ayer coll.



A Wisconsin "oddity". In some small towns the railroad ticket agent was also postmaster and occasionally he illegally and improperly applied his rail ticket stamp to cancel letters



Scarce Waterbury Conn. Leaf



Rutland, Vt.
Fraternal Emblem
Herst-Sampson 1961



Probable Territorial Usage
Oregon Became State in 1859

MARIO

Made in Germany



Very scarce gold camp postmark. Rabbit Town became LaPorte in 1857, only two years after the establishment of its post office



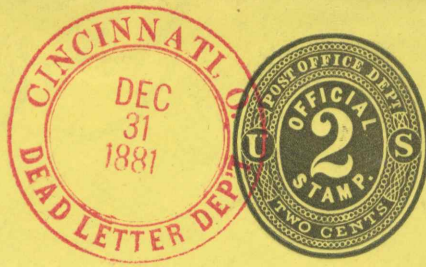
Very Scarce Postmark



N. Y. & Boston Stmb. & R. R. R. Scarce.



Territorial Usage, with the PM's name in the postmark.



Scarce Territorial Usage



Canton, Miss. Lyre

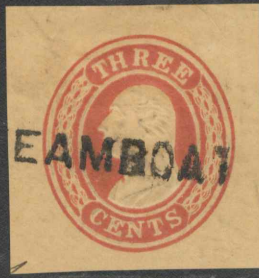


Scarce Mother Lode Town Pmk.



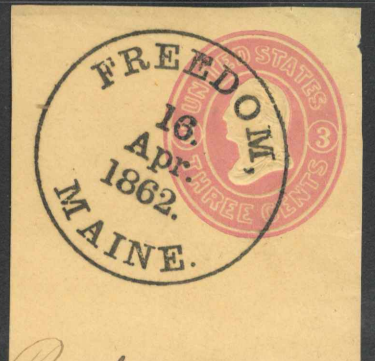
VARIO

M 19 15 Germany





Waterbury, Conn.



VARIO

M. B. M. Germany



Arizona Territory
County Postmark



ARBELA
JUL
1
MICH.



NORTH BOSCAMEN
MAY
1
1884
N. H.



BULGER, PA.
JUN
7
1884
A. J. Russell, P. M.



BROADALBIN
JUL
1
1884
N. Y.



CROTON FALLS
AUG
1
N. Y.



SUMMIT
R
2
1884
B. & O. R.R. CO. DIV.



HULMEVILLE
JUL
3
1884
PENNA.



WILLEV, ILL.
OCT
1
1884
CHAS. HALL, P. M.



EAST BROOKFIELD
MAY
1
1884
MASS.



WYANDOTTE
JUN 3 1884
MICHIGAN.



CUTCHOGUS
AUG
4
1884
SUFFOLK CO., N. Y.



FORT TIA
MAY
22
1884
ARIZONA



BELVIDER
MAY
31
1884
N. J.



NICKEL MINES
MAY
5
1884
PENNA.



FURNACE
JUL 1 1885
MASS



AYMONT
JAN
1
1875
DEL.



DE- THE MESSAGE ON THE OTHER

VARIO

Made in Germany





WELB TO CASUALTY