

HELIGOLAND



H. I. M. ges. geschützt No. 303

Grün ist das Land,
Roth ist die Kant,
Weiss ist der Sand,
Das sind die Farben
Von Helgoland.

Helgoland den 20. Juli 1888

Eufonsofot quiddige Louis!

Im Namen Ihres Gauen Gammels haben
ich hier gleich nach der Ankunft eines un-
freundlichen Entlassung als ob. Bitte, besorgen
Sie Gauen J. J. mit größter Eiferung aus. Ich
möchte am Schiff befehl und der Post. Es giebt aber
keine Briefumflüge mit einem der besten Meistern
mit besagter Gauen Gammels sagt Max Müller

Front of Souvenir Post Card showing an imaginary aerial view of the Island of Heligoland and with a verse describing it.



Back of Card - Mailed to Berlin and franked with a 10 Pfennig stamp (Scott #17) postmarked on July 20, 1888.

IMPORTANT DISTINGUISHING CHARACTERISTICS

The stamps of Heligoland occur with one of three varieties of the head and these are very important for correct identification.



Head Type I. This type has a full solid unindented hair knot which reminds one of a knob. The outline of the hair joins the second jewel of the crown so that the first two jewels stand out above the head. The truncation of the bust at the rear is slightly incurved.

Head Type II. In this head type there is very definitely a curl which looks precisely like a corkscrew. Only the first jewel of the crown stands out. Truncation of the bust at the back is not incurved.

Head Type III. In this head type the curl resembles a tuck comb and the bottom part is concave downward. Two jewels stand out above the head. Truncation of the bust at the back is not incurved.

HELIGOLAND

1867-68

Rouletted 10

Center Embossed

Unwmkd.



#1



#1A



#2



#3



#4

1869-71

Perf. 13 1/2 x 14 1/4

Center Embossed

Thick Soft Paper



#5



#6

1873

Perf. 13 1/2 x 14 1/4

Center Embossed

Thick Quadrille Paper



#7



#8



#9



#10



#11



#12

HELIGOLAND

1874

Perf. 13 1/2 x 14 1/4

Center Embossed

Thin Wove Paper



#13

1875

Perf. 13 1/2 x 14 1/4

Center Embossed

Wove Paper



#14



#15



#16



#17



#18



#19

HELIGOLAND

1876-90

Perf. 13 1/2 x 14 1/4

Wove Paper

Unwatermarked



#20



#21

1879

Perf. 13 1/2 x 14 1/4

Typographed

Unwatermarked



#22



#23

1879

Perf. 11 1/2 x 11 1/2

Typographed

Unwatermarked



#24



#25

These stamps, Scott #24 and #25, are proofs submitted to the Government of Heligoland when the plates were completed and, through some breach of trust, some were used. These are the scarcest of the Heligoland stamps, there being only 100 of each produced.

HELIGOLAND

General. All Heligoland Stamps issued from 1867 through 1875 were printed at the Imperial Printing Office in Berlin. The dies were engraved on steel by M. Schilling. Multiple plates were required since the stamps were printed in two colors and the center was embossed. The plates were made up by assembling units of varying sizes into a complete plate consisting of five horizontal rows of ten stamps each. A full sheet, therefore, contained fifty stamps.

1/2 Schilling Rouletted - Scott #1

Issue of April 15, 1867. There was only one printing of this stamp and this consisted of 20,000 copies. Head Type I. Rouletted 10. Blue green and deep rose.



1 Schilling Rouletted - Scott #2

Issue of April 15, 1867. There was only one printing of this stamp and this consisted of 40,000 copies. Head Type I. Rouletted 10. Rose and dark green.



2 Schilling Rouletted - Scott #3

Issue of April 15, 1867. There was only one printing of this stamp and this consisted of 100,000 copies. Head Type I. Rouletted 10. Bright lilac carmine and pale yellow green.



Varieties. The first stamp on the first horizontal row on each sheet has the upper label differing from that of the others. The figure "2" on the left is without the usual end to its tail. The figure "2" on the right also differs from the rest, being slightly larger.





Scott #3. This is a full sheet of fifty stamps. Note that the rouletting knives have formed a "V" shaped groove. The bend in the paper on each side of this groove is called the "ridge" and its presence is one of the distinguishing features of the original stamps. Noe of the reprints have this ridge.

6 Schilling Rouletted - Scott #4

Issue of April 15, 1867. There was only one printing of this stamp and this consisted of 200,000 copies. Head Type I. Rouletted 10. Gray green and lilac rose (sometimes referred to as frosted rose).



1/2 Schilling Perforated - Scott #5

There are eight different printings of the 1/2 Schilling perforated, six of these being on thick soft paper (Scott #5) and two on thick quadrille paper (Scott #9).

Printing (1st) of April 3, 1869. Edition of 20,000 copies. Thick soft wove paper. Head Type II. Perf. 13 1/2 x 14 1/4. Colors are yellowish green to bluish green and dark carmine.



Printing (2nd) of August 1870. Edition of 15,000 copies. Thick soft wove paper. Head Type II. Perf. 13 1/2 x 14 1/4. Colors are yellowish green to bluish green and carmine.



Printing (3rd) of July 1871. Edition of 25,000 copies. Thick soft wove paper. Head Type II. Perf. 13 1/2 x 14 1/4. Colors are bronze green and carmine red.



1/2 Schilling Perforated - Scott #5

Printing (4th) of January 1872. Edition of 10,000 copies. Thick soft wove paper. Head Type II. Perf. 13 1/2 x 14 1/4. Colors are bright yellow green and dull rose.



Printing (5th) of July 15, 1872. Edition of 20,000 copies. Thick soft wove paper. Head Type II. Perf. 13 1/2 x 14 1/4. Bright olive green and carmine.



Printing (6th) of September 6, 1872. Edition of 10,000 copies. Thick soft wove paper. Head Type II. Perf. 13 1/2 x 14 1/4. Colors are bright yellowish light green and carmine.



1 Schilling Perforated - Scott #6

There are four different printings of the 1 Schilling perforated, two of these being on thick soft wove paper (Scott #6) and two on thick quadrille paper (Scott #11).

Printing (1st) of July 1871. Edition of 25,000 copies. Thick soft wove paper. Head Type III. Perf. 13 1/2 x 14 1/4. Dull carmine and yellow green.



Printing (2nd) of July 15, 1872. Edition of 5,000 copies. Thick soft wove paper. Head Type III. Perf. 13 1/2 x 14 1/4. Rose carmine and sap green.



1/4 Schilling - Scott #7

There are two printings of this stamp. Although there is supposedly a color difference in the two printings, some stamps of the 2nd Printing closely resemble the 1st Printing and can only be identified by the use of an ultra-violet light.

Printing (1st) of August 8, 1873. Edition of 15,000 copies. Thick quadrille paper. Head Type I. Perf. 13 1/2 x 14 1/4. Pale lilac carmine and pale green.



Printing (2nd) of November 11, 1873. Edition of 50,000 copies. Thick quadrille paper. Head Type I. Perf. 13 1/2 x 14 1/4. Dull lilac rose and pale yellow green. This printing was ordered when it was discovered that the 1/4 Schilling stamps printed on September 23, 1873 were printed with colors reversed.



1/4 Schilling (Error) - Scott #8

Printing of September 23, 1873. When this printing was received in Heligoland, it was discovered that the colors of the frame and of the center had been reversed. The Imperial Printing Office in Berlin was immediately notified and a new lot was ordered. Hence the supply of 50,000 stamps issued on November 11, 1873 and the return to the Printing Office of the 75,000 copies remaining of the wrongly printed stamps. There were, therefore, only 25,000 of these errors issued, the others being destroyed.

Thick quadrille paper. Head Type I. Perf. 13 1/2 x 14 1/4. Colors are bright green and lilac carmine.



1/2 Schilling Perforated - Scott #9

There were two printings of Scott #9, these being the 7th and 8th printing of the 1/2 Schilling perforated stamp.

Printing (7th) of June 13, 1873. Edition of 20,000 copies. Head Type II. Perf. 13 1/2 x 14 1/4. Colors are bluish yellow green and carmine. Thick quadrille paper.



Printing (8th) of August 26, 1873. Edition of 20,000 copies. Head Type II. Perf. 13 1/2 x 14 1/4. Colors are bluish yellow green and dark carmine. Thick quadrille paper.



1 Schilling Perforated - Scott #11

There are two printings of Scott #11, these being the 3rd and 4th printings of the 1 Schilling perforated stamp.

Printing (3rd) of June 13, 1873. Edition of 15,000 copies. Thick quadrille paper. Head Type III. Perf. 13 1/2 x 14 1/4. Colors are carmine and bright green.



Printing (4th) of August 26, 1873. Edition of 15,000 copies. Thick quadrille paper. Head Type III. Perf. 13 1/2 x 14 1/4. Colors are dark carmine and pale green.



3/4 Schilling - Scott #10

Issue of November 24, 1873. There was only one printing of this stamp. Edition of 50,000 copies. Head Type I. Thick yellowish quadrille paper. Perf. 13 1/2 x 14 1/4. Colors are yellow green and dull rose.



1 1/2 Schilling - Scott #12

Issue of September 6, 1873. There was only one printing of this stamp. Edition of 50,000 copies. Head Type I. Thick yellowish quadrille paper. Perf. 13 1/2 x 14 1/4. Colors are yellow green and lilac rose.



1/4 Schilling - Scott #13

Issue of December 21, 1874. There was only one printing of the 1/4 Schilling stamp on thin wove paper. Edition of 100,000 copies. Head Type I. Perf. 13 1/2 x 14 1/4. Colors are rose and yellow green. This stamp was never placed in use because Heligoland adopted a new currency in Marks and Pfennigs.





Scott #13 - 1/4 Schilling - Full sheet of fifty stamps.

1 Pfennig - Scott #14

Issue of February 8, 1875. Edition of 300,000 copies. Yellowish white paper. Head Type II. Perf. 13 1/2 x 14 1/4. Colors are dark lilac carmine and dark green.



2 Pfennig - Scott #15

Issue of February 8, 1875. Edition of 200,000 copies. Yellowish white paper. Head Type II. Perf. 13 1/2 x 14 1/4. Colors are dark green and dark lilac carmine.



5 Pfennig - Scott #16

There are three printings of this stamp. The 3rd Printing was not received until Heligoland had become a part of Germany and, therefore, none are found in used condition.

Printing (1st) of February 8, 1875. Edition of 100,000 copies. Thin yellowish white paper. Head Type II. Perf. 13 1/2 x 14 1/4. Lilac carmine and green.



Registered cover dated August 6, 1887 from Heligoland to Berlin franked with Scott #16, 17, 18 and 21.

5 Pfennig - Scott #16

Printing (3rd) of August 16, 1890. Edition of 20,000 copies.
White paper. Head Type II. Perf. 13 1/2 x 14 1/4. Colors
are dull lilac red and dark green. This stamp was never plac-
ed in use.



10 Pfennig - Scott #17

Due to the continuing demand by vacationers for use on post cards, there were five different printings of the 10 Pfennig stamp.

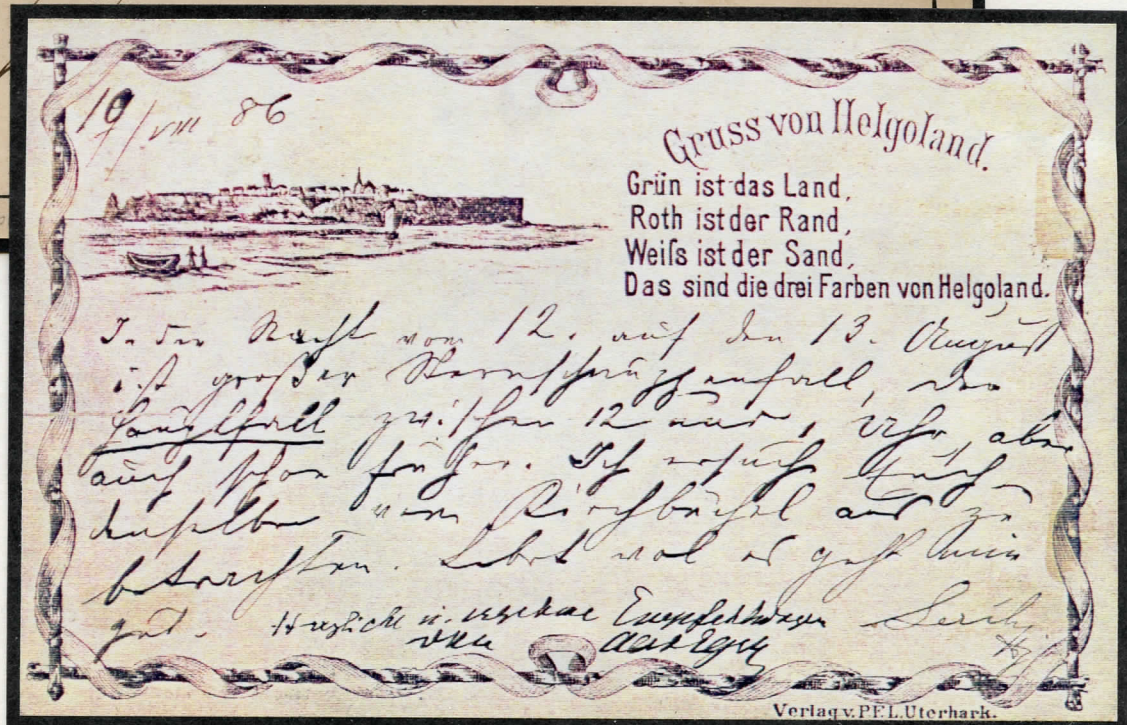
Printing (1st) of February 8, 1875. Edition of 100,000 copies. The paper is yellowish white. Head Type II. Perf. 13 1/2 x 14 1/4. Dark green and dull lilac carmine.



Registered cover to Altona, Germany postmarked on September 5, 1878. Franked with a strip of three 10 Pfennig stamps.

10 Pfennig - Scott #17

Printing (2nd) of April 16, 1885. Edition of 20,000 copies. Dull green and dark lilac carmine. Head Type II. Perf. 13 1/2 x 14 1/4. White paper.



On Post Card postmarked August 10, 1886. Front of card shows view of Heligoland with fancy border and verse describing the island.

10 Pfennig - Scott #17

Printing (3rd) of May 21, 1887. Edition of 60,000 copies. Bright green and either carmine red, weak carmine or eosin red. The paper is yellowish white. Perf. 13 1/2 x 14 1/4. Head Type II.



Post Card to Altona postmarked September 1, 1888.



Post Card to Posen postmarked July 6, 1887.

10 Pfennig - Scott #17

Printing (4th) of April 27, 1889. Edition of 60,000 copies. Paper is yellowish white. Head Type II. Perf. 13 1/2 x 14 1/4. Color is bright green and light red.



Post Card postmarked September 18, 1889 and with the receiving postmark of Hamburg, Germany on September 19, 1889.

This post card is one of the various souvenir cards which closely resemble the regular postal stationery. These were used to advertise the Island of Heligoland as a vacation spot. On the back in the upper left hand corner is a picture of the island in color.

10 Pfennig - Scott #17

Printing (5th) of May 29, 1890. Edition of 100,000 copies. White paper. Head Type II. Perf. 13 1/2 x 14 1/4. Colors are bluish green and carmine.



10 Pfennig - Scott #17

Printing (5th) of May 29, 1890. The margins of the sheets of this printing sometimes have letters on them, portions of the inscription "Reichs Druckerei" (Imperial Printing Office), or figures- 1, 2, 3, 4, 5, 10, 20, 25, etc. up to 100, printed in blue. The block below is an example of these markings.



41 35 4



Scott #17 - (5th Printing) - 10 Pfennig. Complete sheet of fifty stamps.

25 Pfennig - Scott #18

Issue of February 8, 1875. There was only one printing of this stamp. Edition of 100,000 copies. Head Type II. Perf. 13 1/2 x 14 1/4. The colors are lilac carmine and green.

A figure "6", the meaning of which is unknown, appears in red under the sixth stamp in the bottom row on each sheet.



Block showing
figure "6" in margin



25 Pfennig - Scott #18



Last Day Cover - Registered cover to Hamburg, Germany, postmarked on August 9, 1890 which was the date on which Heligoland was turned over to Germany.



Originals



6

#18 - 18⁵⁰ - 25

Scott #18 - 25 Pfennig. Complete sheet of fifty stamps. Note that the sheet is autographed in the upper right hand corner "Originals-J. Goldner". Goldner was responsible for all the Heligoland reprints.

50 Pfennig - Scott #19

There are two different printings of the 50 Pfennig stamp. Colors of the two printings are unusually close to each other.

Printing (1st) of February 8, 1875. Edition of 40,000 copies. Thin grayish white paper. Head Type II. Perf 13 1/2 x 14 1/4. The colors are dark lilac carmine and green.



Used block of four.



50 Pfennig - Scott #19

Printing (2nd) of May 29, 1890. Edition of 20,000 copies. Thin very white paper. Head Type II. Perf. 13 1/2 x 14 1/4. Deep carmine and green.



3 Pfennig - Scott #20

There are two printings of this stamp. Engraved on copper by M. Alwin Schiffner and printed at the Imperial Printing Office in Berlin. These were printed in strips of ten stamps.

Printing (1st) of April, 1876. Edition of 30,000 copies. White paper. Perf. 13 1/2 x 14 1/4. Frame in green; arms in black, deep green, carmine red and yellow (frame of shield).



Printing (2nd) of February 14, 1877. Edition of 50,000 copies. White paper. Perf. 13 1/2 x 14 1/4. Frame in green; arms in black, deep green, carmine red and orange (frame of shield).



20 Pfennig - Scott #21

There are eight printings of this stamp. Engraved on copper by M. Alwin Schiffner and printed at the Imperial Printing Office in Berlin. Printed in strips of ten stamps. There are no reprints.

Printing (1st) of April, 1876. Edition of 20,000 copies. White paper. Perf. $13 \frac{1}{2} \times 14 \frac{1}{4}$. Frame in lilac carmine; arms in black, blue green, deep lilac carmine and yellow (frame of the shield). Scott #21b.



Printing (2nd) of April 19, 1880. Edition of 20,000 copies. The paper is white. Perf. $13 \frac{1}{2} \times 14 \frac{1}{4}$. Frame in lilac rose; arms in black, dark green, deep lilac rose and brown (frame of shield).



This printing is Scott #21d. A variety of this printing in which the color shows through on the back, the so-called aniline rose, is Scott #21c.

20 Pfennig - Scott #21

Printing (3rd) of June 8, 1882. Edition of 50,000 copies. White paper. Perf. 13 1/2 x 14 1/4. Frame is bright rose lilac; arms in black, green, orangish rose lilac and grayish yellow (frame of shield). This variety is not listed by Scott.



Printing (4th) of March 20, 1884. Edition of 50,000 copies. The paper is white. Perf. 13 1/2 x 14 1/4. Frame in eosin red; arms in black, gray green, orangish eosin red and greenish yellow (frame of shield). Scott #21e.



20 Pfennig - Scott #21

Printing (5th) of April 16, 1885. Edition of 60,000 copies. The paper is white. Perf. 13 1/2 x 14 1/4. Frame in pale rose; arms in black, dark gray green, pale orangish rose and citron yellow (color of frame). The printing not listed by Scott.



Printing (6th) of May 27, 1886. Edition of 60,000 copies. The paper is white. Perf. 13 1/2 x 14 1/4. Frame in bright orange red; arms in black, gray green, bright orange red and yellow (color) of shield. This printing not listed by Scott.



20 Pfennig - Scott #21

Printing (7th) of June 6, 1888. Edition of 100,000 copies. White paper. Perf 13 1/2 x 14 1/4. Frame in red orange; arms are black, bright gray green, red orange and bright yellow (color of the frame). Scott #21.



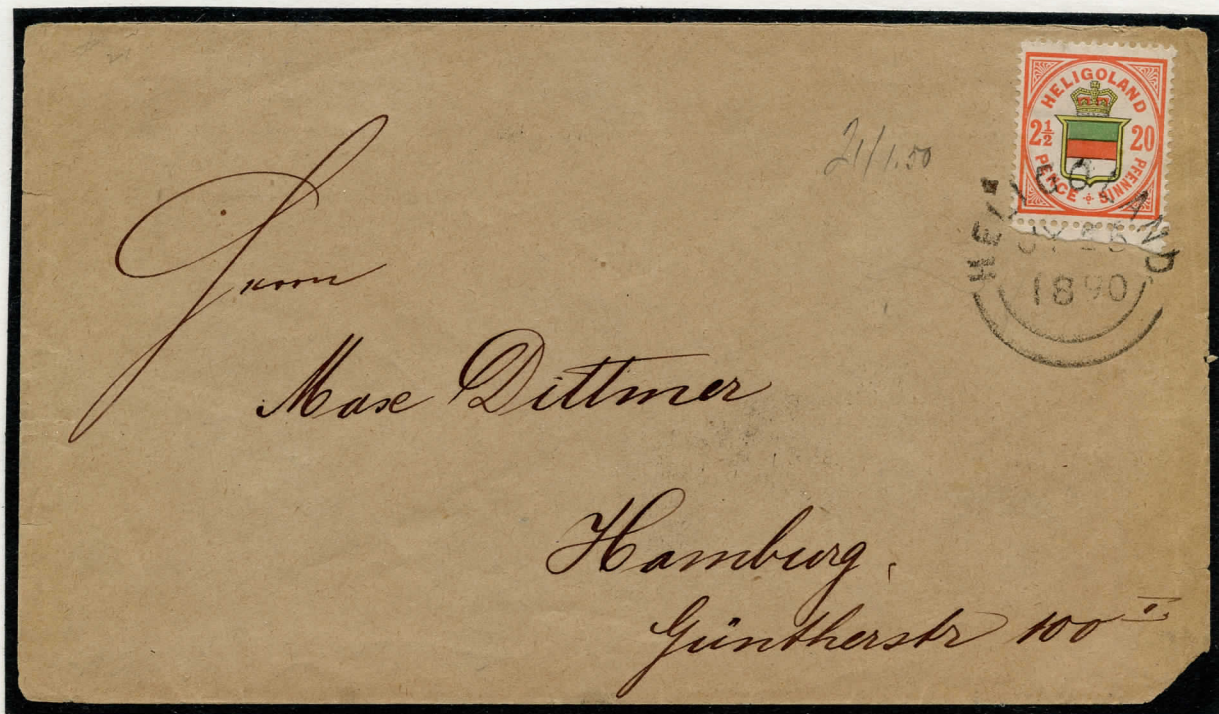
Cover to Leipzig, Germany postmarked July 26, 1890.

20 Pfennig - Scott #21

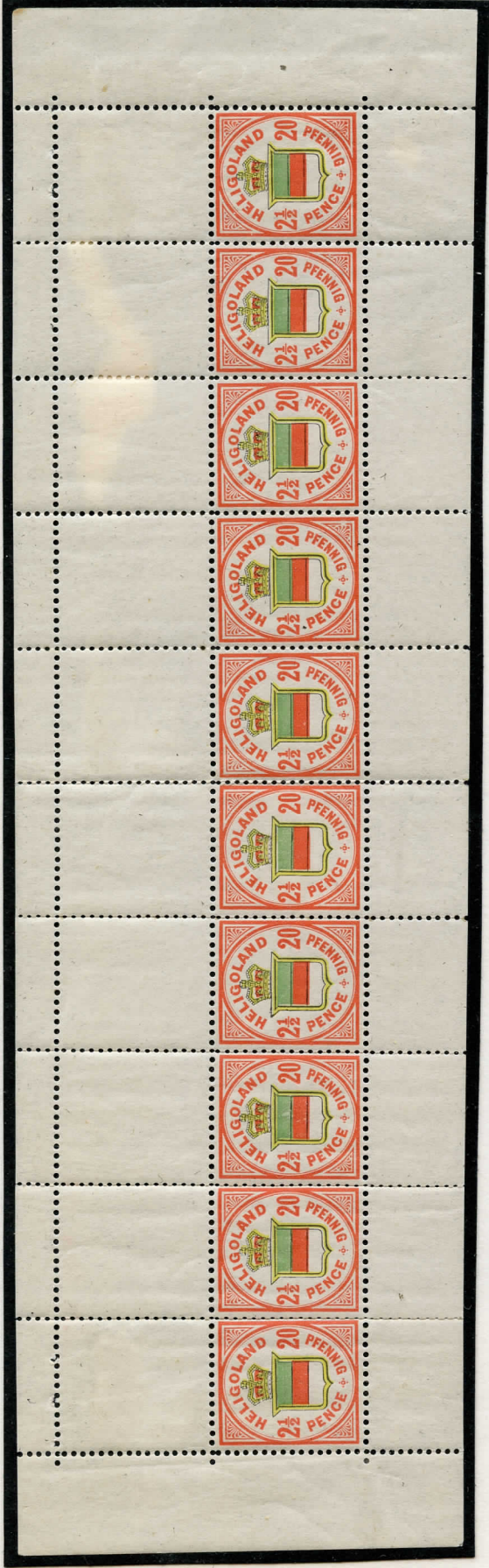
Printing (7th) of June 6, 1888. Covers with stamps from this printing are more common than those of the other printings.



Cover to Hamburg, Germany postmarked August 6, 1890.



Cover to Hamburg, Germany postmarked July 25, 1890.



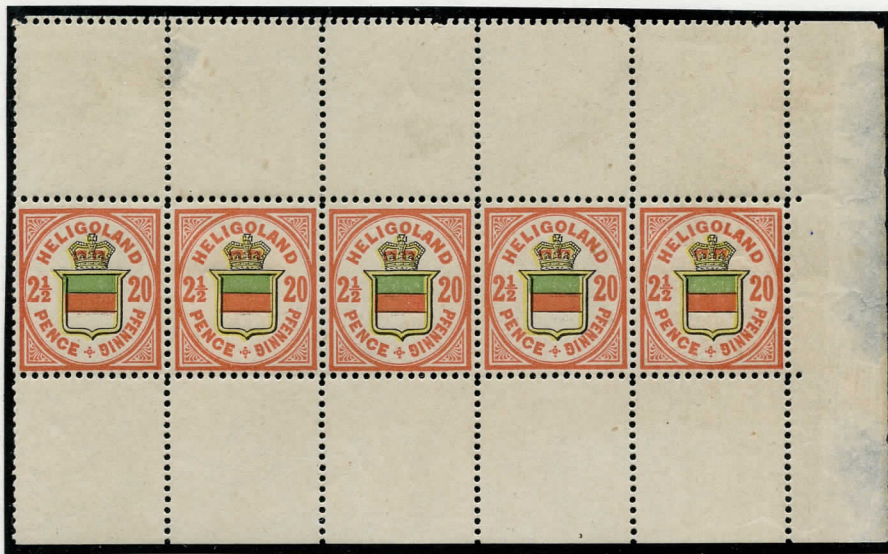
20 Pfennig - Scott #21 - Seventh Printing. Complete sheet of ten stamps.



20 Pfennig - Scott #21a - Eighth Printing. Complete sheet of ten stamps.

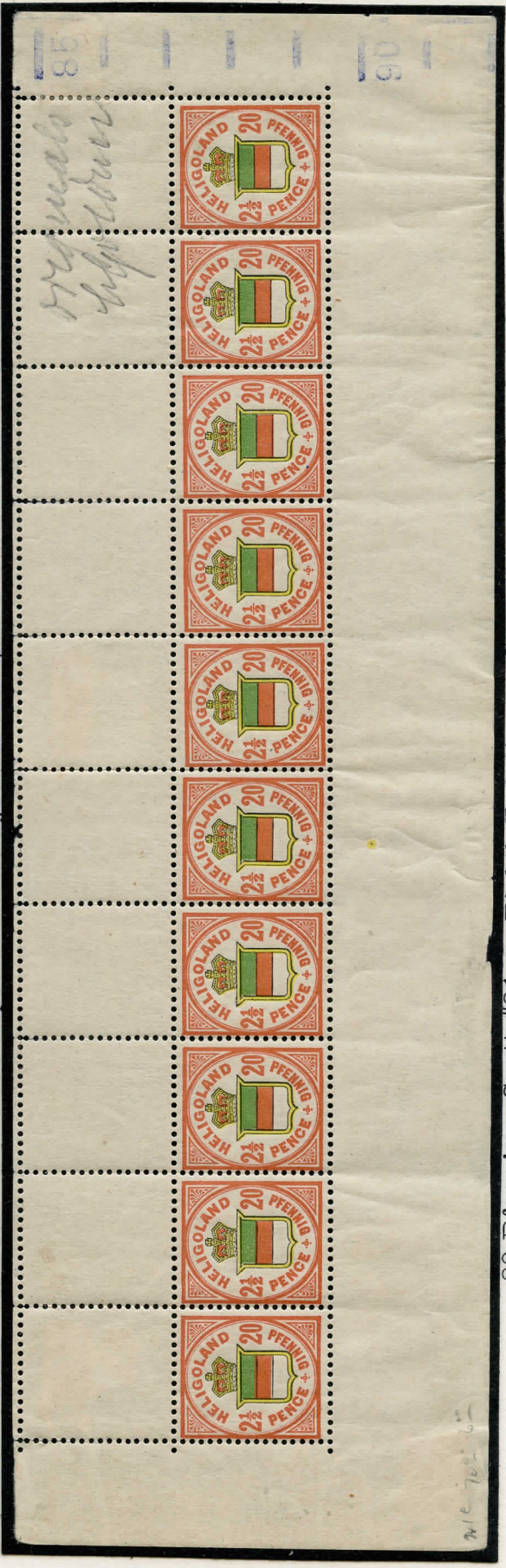
20 Pfennig - Scott #21

Printing (8th) of May 29, 1890. Edition of 60,000 copies. White paper. Perf. 13 1/2 x 14 1/4. Frame in dull red; arms in black, bright gray green, brick red and bright yellow (color of frame). Impression is coarser than on the other printings.





20 Pfennig - Scott #21a - Eighth Printing. Complete sheet of ten stamps. Autographed in upper right corner by Julius Goldner who was responsible for the numerous reprints of Heligoland stamps.



20 Pfennig - Scott #21a - Eighth Printing. Complete sheet of ten stamps. Note blue dashes and numbers in right margin. Autographed by J. Goldner.

1 Mark - Scott #22

The 1 Mark stamp had three printings, the last one sometimes being considered an official reprint since it wasn't delivered until after Heligoland became a part of Germany. Engraved on steel by M. Alwin Schiffner and printed at the Imperial Printing Office in Berlin.

Printing (1st) of August 1879. Edition of 10,000 copies. The color is blue green, salmon and black. Perf. $13 \frac{1}{2} \times 14 \frac{1}{4}$. This printing produced sheets of twenty-five 5 Mark stamps at the left and twenty-five 1 Mark stamps at the right, in five horizontal rows of five. Scott #22a.



Printing (2nd) of April 27, 1889. Edition of 5,000 copies. The color is dark green, carmine and black. Perf. $13 \frac{1}{2} \times 14 \frac{1}{4}$. This printing was from a plate of fifty 1 Mark stamps in two groups of twenty-five. Scott #22.



Printing (3rd) of August 16, 1890. Edition of 5,000 copies. The color is green, bright red and black. This is Scott #22b.



5 Marks - Scott #23

There was only one printing of this stamp. It was printed on the same sheet with the first printing of the 1 Mark stamp, there being twenty-five 5 Mark stamps at the left and twenty-five 1 Mark stamps on the right. Engraved on steel by M. Alwin Schiffner and printed at the Imperial Printing Office in Berlin.

Issue of August 1879. Edition of 10,000 copies. The colors are blue green, salmon and black. Perf. 13 1/2 x 14 1/4.



CANCELLATIONS

The Heligoland Obliterations

From the time of their introduction, in 1867, the stamps of Heligoland were cancelled with a date stamp similar to those employed in England at that time. This stamp was renewed several times. It is of circular shape, at the top "Heligoland" in a curve, at the bottom two curved lines to complete the circle; in the middle the date, in two lines, the month being denoted by two letters, followed by numerals, with the year in figures in full. With the exception of the figures "18" the whole of the letters and figures in the center were movable.

The different months were indicated as follows:

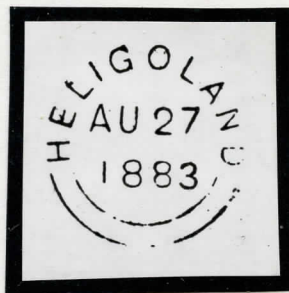
JA " January	JY " July
FE " February	AU " August
MR " March	SP " September
AP " April	OC " October
MY " May	NO " November
JU " June	DE " December

Type 1. This type was in use previous to the introduction of postage stamps and was applied to letters as a date mark before 1867. It was then used for cancelling the stamps when they came into use. This mark may be recognized by the exceptionally wide figures; it was in use as a cancelling device from April 1867 until January 1876.



CANCELLATIONS

Type 2. This type has narrower figures and the letters "Heligoland" are more spaced. It was in use from February 1876 to November 1884.



Type 3. This type has the letters of the word "Heligoland" spaced wider than in the first type and taller than those of the second, which it resembles in having narrower figures. The letter "G" is better formed and is less like a "C" than before. It was in use until the end of July 1885.



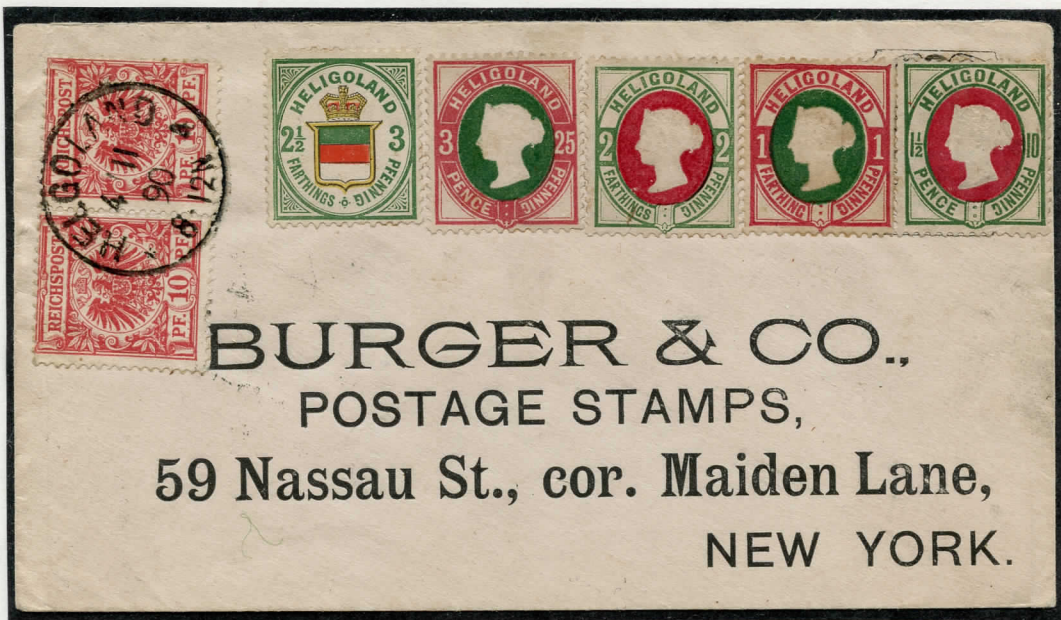
CANCELLATIONS

Type 4. This type is similar to Type 3 differing only in having the outer curved line shorter than the inner, at the right, that end having apparently been broken off. This was in use from July 1885 until the British Post Office was closed on August 9, 1890. This cancellation is sometimes found on various copies of the reprints.



CANCELLATIONS

Type 5. This type is the cancellation of the German Post Office used on Heligoland postage stamps for one day only, August 10, 1890; the island having been taken over, this cancellation was used to obliterate the stamps on the letters posted the previous day



This cover shows a Type 5 cancellation (but dated November 4, 1890) used on the regular German stamps in use after Heligoland was transferred to Germany. The Heligoland stamps are originals and were apparently placed on the cover merely for decoration, since they had no franking power at this time.

CANCELLATIONS

Treaty Obliterations

By agreements made between the Heligoland Post Office and the various shipping companies, which carried on a service between Heligoland and certain ports on the Elbe River (Geestemunde, Hamburg and Ritzebuttel-Cuxhaven), the public was permitted to deposit their letters for transmission abroad in boxes on board the ships up to the time of departure. These boxes were opened at the Post Offices of the ports on the mainland and stamps cancelled. These offices had special cancelling devices which were used very irregularly.

Type 6. This type was used at Geestemunde probably when letters were taken to the Post Office of the town, which is beyond the Customs Frontier.



CANCELLATIONS

Type 7. Geestemunde is in Hanover; it was there that Steam Packets on their way to Bremen deposited the mails from Heligoland. The Post Office of this town had a hand stamp of peculiar shape to mark the place of origin of the postal packets received from this island. It consisted of the inscription "AUS HELIGOLAND" (from Heligoland) in a frame arched at the top. This was always impressed in black from 1867.



Type 8. On letters from May 1873 to 1875 this type was used at Geestemunde. It consists of a circular mark 24 mm in diameter with the town name "Geestemunde" in an arch over figures indicating the day, month, year and hour.



This is a cover postmarked August 3, 1874 showing both Type 7 and Type 8 cancellations. It is backstamped with the Hamburg horseshoe cancellation.

CANCELLATIONS

Type 9. This type was used in Hamburg; it measures 27 1/2 x 4 mm. and is followed by a period. It is found on the first issue of Heligoland and not only did it indicate the place of origin but it also served as a cancellation. In addition the Hamburg Post Office usually applied the date stamp which was employed for Hamburg letters.



Type 10. This type is similar to the one above but has larger letters, measuring 36 x 4 1/2 mm. and is unpunctuated. This and Type 9 were employed indiscriminately up to the date of suppression of the Heligoland stamps.



Type 11. This is a circular mark inscribed "HAMBURG ST. P" with figures denoting the day, month and year in the center and the hour below. This was usually impressed in blue. It is found with the outer circle both broken and unbroken.



CANCELLATIONS

Type 12. This is another circular mark used in Hamburg and occasionally impressed on the stamps of Heligoland.



Type 13. This is also a circular mark. It is inscribed in blue "St. P. A. HAMBURG" with the day month and year.



Type 14. This is one of the regular Hamburg cancellations which consists of a double circle with "HAMBURG" in large letters at the top and figures denoting the hour at the bottom. Figures in the center indicate day, month and year.



CANCELLATIONS

Type 15. Ritzebüttel is a suburb which was united to Cuxhaven in 18--?. From that time the letters were cancelled with the date stamp of Cuxhaven, a small seaport. The only Ritzebüttel postmark known on Heligoland stamps is Type 15; it was used as an obliterating mark from 1867 to 1873. The word measures 38 x 3 1/2 mm. and was impressed in black.

RITZEBÜTTEL



Type 16. A special mark was employed at Cuxhaven in 1873, indicating the place of departure as well as that of arrival; "Aus Heligoland - über Cuxhaven" (From Heligoland - for Cuxhaven). This was struck in black.



Aus Heligoland
über Cuxhaven

REPRINTS

The plates from which the reprints were made were sold by the Heligoland Government to a Hamburg stamp dealer named Julius Goldner.

He had reprints made from them first at the Imperial Printing Office in Berlin, next by the firm of Giesecke & Deverindt in Leipsig and finally by the firm of F. Schlotke in Hamburg. Thus, the reprints are usually referred to as the Berlin, Leipsig and Hamburg reprints.

The total number of reprints made in Berlin was 1,680,000. No record is available of the number of Leipsig and Hamburg reprints but they are estimated at over 5,000,000.



Reprints are sometimes found with genuine cancellations. This card and cancellation are genuine while the stamps are examples of the 2nd Berlin Reprint.



Cancelled Reprints

OFFICIAL LETTER CONCERNING REPRINTS

Post-Office



HELIGOLAND.

Heligoland, den 14 Januar 1879

*Herrn Julius Goldner in Hamburg
wird hiermit endlich bescheinigt dass
Derselbe
Government
zu sammt
in Schilling
Hamburg
den hier
rechts ma
vom Koenig
zur Selbst
aller fr
haken*



1st Berlin Reprint

Heligoland, January 14, 1879

"It is hereby officially certified to Mr. Julius Goldner of Hamburg that the latter has purchased, with the approval of the Royal Government, the plates for printing all the stamps with values in Hamburg schilling, which were formerly in use in this Postal Department, and that there has been granted to the aforesaid Mr. Goldner, as lawful possessor of the plates above mentioned, the permission of the Royal Government to manufacture, on his own account, and to sell, all the obsolete stamps of Heligoland with values in schilling.

Post-office Department of Great Britain,
R. Pilger, Postmaster.

Certified.
H. Gatke,
Government Secretary Administering the Government.

Govt. Office, Heligoland, 15th January, 1879"



Certificat

H. Gatke

*Government Secretary
Administering the Government.*

Govt. Office

Heligoland 15th January 1879.



1st Berlin Reprint

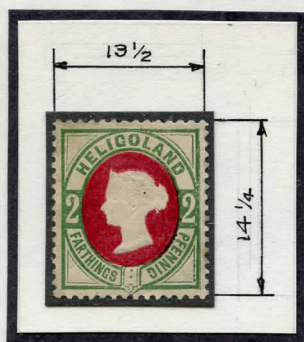
REPRINTS

Reprints are distinguished from the originals by several different factors. The most important of these are as follows:

1. Head type
2. Perforation
3. Presence or absence of the "ridge" on rouletted stamps
4. Paper type
5. Gum
6. Color in ordinary light
7. Color in ultra-violet light

PERFORATIONS

The first five major varieties of Heligoland are rouletted. All of the others are perforated and all but Scott #24 and #25 the perforations measure $13\frac{1}{2}$ horizontally by $14\frac{1}{4}$ vertically. The Berlin and the Leipzig Reprints also are perforated $13\frac{1}{2} \times 14\frac{1}{4}$, but in the Leipzig Reprints the diameter of the holes is small giving a blunt appearance to the perforations. The Hamburg Reprints are perforated 14×14 .



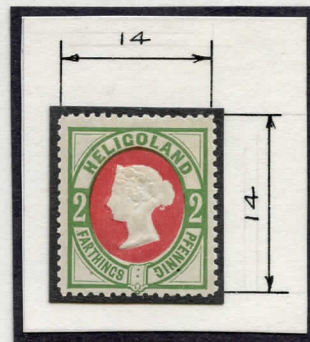
Original



Berlin Reprint



Leipzig Reprint



Hamburg Reprint

COUNTERFEITS

These were not printed from the original plates as were the reprints and are very scarce.



ROULETTING

The first five Heligoland stamps (Scott #1, #1A and #2 thru #4) are rouletted. This rouletting is not cleancut and the edges of the stamps appear ragged and fuzzy due to loose paper fibers.

The rouletting of the reprints in general is more cleancut than the originals, particularly the Hamburg Reprints which sometimes appear to be almost imperf. Any truly imperf. stamp encountered is a reprint since no original was issued in this condition.



Original



Berlin Reprint



Leipzig Reprint



Hamburg Reprint

THE "RIDGE" ON ROULETTED STAMPS

The sheets of originals were rouletted 10 from the face side. The rouletting grid was backed by a counter form made up of a grid of grooved metal. Due to this negative grid, the rouletting on the sheet always had a very pronounced V-shaped indentation. Thus, the extreme margins of the stamps show a crease or ridge along the line at which the margins is folded or impressed downward.

This is the "Ridge". This is sometimes difficult to see but is usually visible on at least one margin of the stamp. Holding a stamp so that a light source is almost parallel to the surface is very helpful in seeing this.



HEAD TYPE

The reprints of the stamps of Heligoland occur with one of four varieties of the head and these are very important for the correct identification of reprints and their differentiation from originals.

Head Type I. This type has a full solid unindented hair knot which reminds one of a knob. The outline of the hair joins the second jewel of the crown so that the first two jewels stand out above the head. The truncation of the bust at the rear is slightly incurved.

Head Type II. In this head type there is very definitely a curl which looks precisely like a corkscrew. Only the first jewel of the crown stands out. Truncation of the bust at the back is not incurved.

Head Type IIA. This type is a variety of Type II in which the curl is just almost missing.

Head Type III. In this head type the curl resembles a tuck comb and the bottom part is concave downward. Two jewels stand out above the head. Truncation of the bust at the back is not incurved.



Head Type I



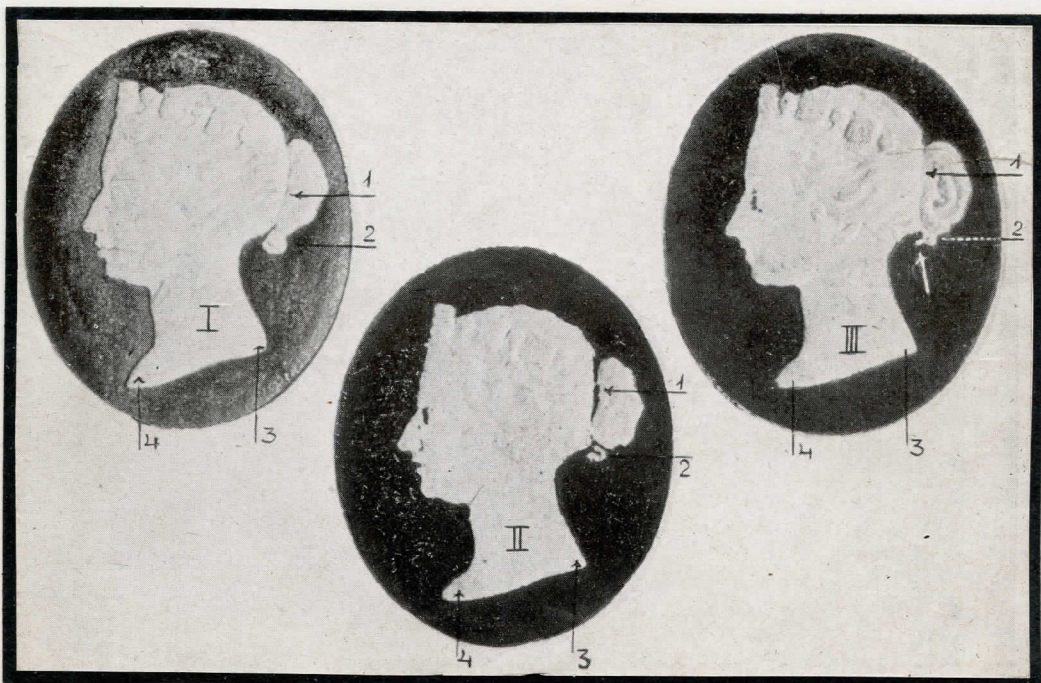
Head Type II



Head Type IIA



Head Type III



All reprints (except the 3 Pfennig - Scott #20) were printed in sheets of 50 stamps. This is the 1st Berlin Reprint of Scott #1A.



1/2 Schilling Rouletted - Scott #1A

1st Berlin Reprint. Printing of June 6, 1875. Edition of 75,000 copies. Head Type II. No ridge. Colors are dirty yellow green and dull rose to dull carmine. This is considered to be an official reprint since it was ordered and received by the Heligoland Government even though it was no longer good for use.



2nd Berlin Reprint. Printing of May 21, 1879. Edition of 45,000 copies. Head Type II. No ridge. Colors are yellowish green and dull rose.



3rd Berlin Reprint. Printing of May 30, 1884. Edition of 25,000 copies. Head Type II. No ridge. Colors are moss green and carmine red to rose.



1/2 Schilling Rouletted - Scott #1A

Leipzig Reprint. Printing of March 9, 1888. Head Type II. No ridge. White surfaced paper. Smooth gum. Colors are yellow green and dull carmine.



1st Hamburg Reprint. Printing of January 31, 1891. Head Type II. No ridge. Smooth white paper. Colors are bronze green and pale rose.



2nd Hamburg Reprint. Printing of July 12, 1892. Head Type II. No ridge. Smooth white paper. Colors are yellow green and dull rose red.



1/2 Schilling Rouletted - Scott #1A

3rd Hamburg Reprint. Printing of July 19, 1893. Head Type II.
No ridge. Smooth white paper. Colors are bright green and flesh.



4th Hamburg Reprint. Printing of March 21, 1895. Head Type II.
No ridge. Smooth white paper. Colors are dark olive green and deep rose.



Miscellaneous Hamburg Varieties. Several fancy and also many defective varieties were produced by the printer at Hamburg.



Head not embossed
Imperf.



Printed in black
Imperf.

1 Schilling Rouletted - Scott #2

All of the reprints of this stamp have Head Type III while the originals have Head Type I. Therefore, it causes little difficulty.

1st Berlin Reprint. Printing of May 21, 1879. Edition of 45,000 copies. Head Type III. No ridge. Colors are lilac carmine and yellowish gray green.



2nd Berlin Reprint. Printing of May 30, 1884. Edition of 25,000 copies. Head Type III. No ridge. Colors are deep carmine and yellow green.



1 Schilling Rouletted - Scott #2

Leipzig Reprint. Printing of March 9, 1888. Head Type III. No ridge. White surfaced paper. Smooth gum. Colors are deep carmine and olive green.



1st Hamburg Reprint. Printing of January 31, 1891. Head Type III. No ridge. Smooth white paper. Colors are reddish carmine and green. In general the quality of the printing is poor.



1 Schillig Rouletted - Scott #2

2nd Hamburg Reprint. Printing of July 12, 1892. Head Type III.
No ridge. Smooth white paper. Colors are red and yellowish gray green.



3rd Hamburg Reprint. Printing of July 19, 1893. Head Type III.
No ridge. Smooth white paper. Colors are carmine red to rose red and yellow olive green.



2 Schilling Rouletted - Scott #3

Berlin Reprint. Printing of August 1879. There was only one reprint of this stamp made in Berlin. Edition of 35,000 copies. Head Type I. No ridge. Colors are deep dull lilac carmine & green.



Leipzig Reprint. Printing of March 9, 1888. No ridge. White surfaced paper. Smooth gum. Colors are deep carmine and green.



2 Schilling Rouletted - Scott #3

1st Hamburg Reprint. Printing of January 31, 1891. Head Type I.
No ridge. Smooth white paper. Colors are dark red the salmon
red and grass green.



2nd Hamburg Reprint. Printing of July 12, 1892. Head Type I.
No ridge. Smooth white paper. Colors are salmon red and olive
green.



2 Schilling Perforated - Scott #3

The original Scott #3 was never issued perforated. Julius Goldner, who had purchased the plates from the Heligoland Government, decided that collectors would also like perforated examples of this issue so he had some of his reprints perforated.

1st Berlin Reprint. Printing of August 1879. Edition of 35,000 copies. Head Type I. Perf. 13 1/2 x 14 1/4. Colors are dull lilac rose and grass green.



2nd Berlin Reprint. Printing of May 30, 1884. Edition of 20,000 copies. Head Type I. Perf. 13 1/2 x 14 1/4. Colors are dull salmon red and grass green.



2 Schilling Perforated - Scott #3

Leipzig Reprint. Printing of March 9, 1888. Head Type I. White surfaced paper. Smooth gum. Perf. 13 1/2 x 14 1/4. Colors are deep carmine and green.



1st Hamburg Reprint. Printing of January 31, 1891. Head Type I. Smooth white paper. Perf. 14 x 14. Colors are dark red to salmon red and grass green.



2nd Hamburg Reprint. Printing of July 12, 1892. Head Type I. Smooth white paper. Perf. 14 x 14. Colors are salmon red to salmon rose and olive green.



6 Schilling Rouletted - Scott #4

This stamp is one of the most difficult of the Heligoland stamps. The difficulty arises from the necessity of distinguishing the originals from the Berlin Reprint. The use of ultra-violet light is very helpful.

Berlin Reprint. Printing of May 21, 1879. There was only one reprint of this stamp made in Berlin. Edition of 35,000 copies. Head Type I. No ridge. Colors are gray blue green and lilac rose purple, both colors being deeper than the originals.



Leipzig Reprint. Printing of March 9, 1888. White surfaced paper. Head Type I. No ridge. Smooth gum. Colors are bluish green and dark claret.



1st Hamburg Reprint. Printing of January 31, 1891. Head Type I. Smooth white paper. No ridge. Colors are gray green and flesh red to dull copper.



6 Schilling Rouletted - Scott #4

2nd Hamburg Reprint. Printing of July 12, 1892. Smooth white paper. Head Type I. No ridge. Colors are gray olive green and dull copper red.



3rd Hamburg Reprint. Printing of July 19, 1893. Smooth white paper. Head Type I. No ridge. Colors are dull olive green and red to dull copper red.



6 Schilling Perforated - Scott #4

The original Scott #4 was never issued in perforated condition. Julius Goldner, who had purchased the plates from the Heligoland Government, decided that collectors would like to have perforated stamps, so he supplied the demand.

1st Berlin Reprint. Printing of August 1879. Edition of 35,000 copies. Head Type I. Perf. 13 1/2 x 14 1/4. Colors are bluish green and dark to dull purple lilac.



2nd Berlin Reprint. Printing of May 30, 1884. Edition of 20,000 copies. Head Type I. Perf. 13 1/2 x 14 1/4. Colors are dull grayish green and purple lilac.



6 Schilling Perforated - Scott #4

Leipzig Reprint. Printing of March 9, 1888. Head Type I. White surfaced paper. Smooth gum. Perf. 13 1/2 x 14 1/4. Colors are bluish green and dark claret.



1st Hamburg Reprint. Printing of January 31, 1891. Head Type I. Smooth white paper. Perf. 14 x 14. Colors are gray green and flesh red to dull copper.



3rd Hamburg Reprint. Printing of July 19, 1893. Smooth white paper. Head Type I. Perf. 14 x 14. Colors are dull olive green to dark green and red to dull copper.



1/2 Schilling - Scott #5

1st Berlin Reprint. Printing of June 6, 1875. Edition of 75,000 copies. Head Type IIA. White paper. Perf. 13 1/2 x 14 1/4. Colors are dirty yellow green and dull carmine to dull rose.



2nd Berlin Reprint. Printing of May 21, 1879. Edition of 5,000 copies. Head Type IIA. White paper. Perf. 13 1/2 x 14 1/4. Colors are yellow green and dull rose. This printing was delivered imperf. Since the imperf. stamps did not sell well, those remaining were returned to Berlin and perforated on May 30, 1884. This resulted in 800 imperf. and 4200 perforated stamps.



Leipzig Reprint. Printing of March 9, 1888. Head Type II. White surfaced paper. Perf. 13 1/2 x 14 1/4. Colors are yellow green and dull carmine.



1/2 Schilling - Scott #5

1st Hamburg Reprint. Printing of January 31, 1891. Smooth white paper. Head Type II. Perf. 14 x 14. Colors are yellow green and dull rose red.



2nd Hamburg Reprint. Printing of July 12, 1892. Smooth white paper. Head Type II. Perf. 14 x 14. Colors are bright green and flesh.



1 Schilling - Scott #6

1st Berlin Reprint. Printing of June 6, 1875. Edition of 75,000 copies. Head Type III. White paper. Perf. 13 1/2 x 14 1/4. Colors are carmine to dull carmine and dull yellowish olive green.



2nd Berlin Reprint. Printing of May 21, 1879. Edition of 5,000 copies. Head Type III. White paper. Perf. 13 1/2 x 14 1/4. Colors are lilac carmine and yellowish gray green. This printing was delivered imperf. Since the imperf. stamps did not sell well, those remaining were returned to Berlin and perforated on May 30, 1884.



1 Schilling - Scott #6

3rd Berlin Reprint. Printing of May 30, 1884. Edition of 25,000 copies. Head Type III. Grayish white paper. Perf. 13 1/2 x 14 1/4. Colors are rose to rose carmine and yellow green to dull green.



Leipsig Reprint. Printing of March 9, 1888. Head Type III. White surfaced paper. Perf. 13 1/2 x 14 1/4. Colors are carmine and olive green.



1 Schilling - Scott #6

1st Hamburg Reprint. Printing of January 31, 1891. Smooth white paper. Head Type III. Perf. 14 x 14. Colors are copper red and light yellow green.



2nd Hamburg Reprint. Printing of July 12, 1892. Smooth white paper. Head Type III. Perf. 14 x 14. Colors are deep copper red and olive green.



3rd Hamburg Reprint. Printing of July 19, 1893. Smooth white paper. Head Type III. Perf. 14 x 14. Colors are deep copper lilac and yellow olive green.



1/4 Schilling - Scott #7

1st Berlin Reprint. Printing of June 6, 1875. Edition of 50,000 copies. Head Type II. White paper. Perf. 13 1/2 x 14 1/4. Colors are wine red and green.



2nd Berlin Reprint. Printing of May 21, 1879. Edition of 30,000 copies. Head Type II. White paper. Perf. 13 1/2 x 14 1/4. Colors are bright carmine red and green.



3rd Berlin Reprint. Printing of May 30, 1884. Edition of 50,000 copies. Head Type II. White paper. Perf. 13 1/2 x 14 1/4. Colors are bright carmine and green.



1/4 Schilling - Scott #7

Leipzig Reprint. Printing of March 9, 1888. Head Type I. White surfaced paper. Perf. 13 1/2 x 14 1/4. Colors are dull red and bluish olive green.



1st Hamburg Reprint. Printing of January 31, 1891. Smooth white paper. Head Type I. Perf. 14 x 14. Colors are pale rose and olive green.



1/4 Schilling - Scott #7

2nd Hamburg Reprint. Printing of July 12, 1892. Smooth white paper. Head Type I. Perf. 14 x 14. Colors are carmine red to rose red and olive green.



Embossed head misplaced

3rd Hamburg Reprint. Printing of July 19, 1893. Smooth white paper. Head Type I. Perf. 14 x 14. Colors are bright carmine red and medium to deep olive green.



4th Hamburg Reprint. Printing of March 21, 1895. Smooth white paper. Head Type I. Perf. 14 x 14. Colors are pale rose and light olive green. Note poor quality of printing.



1/4 Schilling - Scott #8

1st Berlin Reprint. Printing of June 6, 1875. Edition of 50,000 copies. Head Type II. White wove paper. Perf. 13 1/2 x 14 1/4. Colors are reseda green to bright yellow olive green and lilac carmine.



2nd Berlin Reprint. Printing of May 21, 1879. Edition of 30,000 copies. Head Type II. White wove paper. Perf. 13 1/2 x 14 1/4. Colors are pale green and lilac carmine.



1/4 Schilling - Scott #8

3rd Berlin Reprint. Printing of May 30, 1884. Edition of 50,000 copies. Head Type II. White wove paper. Perf. 13 1/2 x 14 1/4. Colors are yellowish green to green and lilac carmine.



Leipzig Reprint. Printing of March 9, 1888. Head Type I. White surfaced paper. Perf. 13 1/2 x 14 1/4. Colors are yellow green and dull carmine.



1/4 Schilling - Scott #8

1st Hamburg Reprint. Printing of January 31, 1891. Smooth white paper. Head Type I. Perf. 14 x 14. Colors are reseda green and dull rose red.



2nd Hamburg Reprint. Printing of July 12, 1892. Smooth white paper. Head Type I. Perf. 14 x 14. Colors are pale green to green and lilac carmine.



3rd Hamburg Reprint. Printing of March 21, 1895. Smooth white paper. Head Type II. Perf. 14 x 14. Colors are reseda green to olive green and carmine to dull carmine red.



3/4 Schilling - Scott #10

1st Berlin Reprint. Printing of June 6, 1875. Edition of 75,000 copies. Head Type I. Perf. 13 1/2 x 14 1/4. Thin white wove paper. Colors are yellow olive green and dull rose to rose carmine.



2nd Berlin Reprint. Printing of May 21 1879. Edition of 5,000 copies. Head Type I. Perf. 13 1/2 x 14 1/4. Thin white wove paper. Colors are green and bright carmine rose. They were delivered in imperf. condition. In May 1884 they were returned to the Imperial Printing Office in Berlin to be perforated since the imperf. were not popular and only a few had been sold.



Imperf.

3/4 Schilling - Scott #10

1st Hamburg Reprint. Printing of January 31, 1891 Smooth white paper. Head Type I. Perf. 14 x 14. Colors are brick red to dull brick red and sea green.



2nd Hamburg Reprint. Printing of July 12, 1892. Smooth white paper. Head Type I. Perf. 14 x 14. Colors are dull brownish red and gray green.



3rd Hamburg Reprint. Printing of July 19, 1893. Smooth white paper. Head Type I. Perf. 14 x 14. Colors are dull brownish red and sea green.



1 1/2 Schilling - Scott #12

1st Berlin Reprint. Printing of June 6, 1875. Edition of 50,000 copies. Head Type II. Thin white paper. Perf. 13 1/2 x 14 1/4. Colors are dull yellow green and rose.



2nd Berlin Reprint. Printing of May 21, 1879. Edition of 5,000 copies. Head Type II. Thin white paper. Perf. 13 1/2 x 14 1/4. Colors are green and lilac carmine. These were delivered in imperf. condition. In May 1884 they were returned to the Imperial Printing Office in Berlin to be perforated since the imperfs. were not popular and only a few had been sold. This resulted in 800 imperf. and 4,200 perforated stamps.



1 1/2 Schilling - Scott #12

3rd Berlin Reprint. Printing of May 30, 1884. Edition of 30,000
Head Type II. Perf. 13 1/2 x 14 1/4. White to creamy thick paper.
Colors are yellow green and rose carmine.



Leipzig Reprint. Printing of March 9, 1888. Head Type I. White
surfaced paper. Perf 13 1/2 x 14 1/4. Colors are gray reseda
green and lilac carmine.



1 1/2 Schilling - Scott #12

1st Hamburg Reprint. Printing of January 31, 1891. Smooth white paper. Head Type II. Perf. 14 x 14. Colors are dull yellow green and raspberry.



2nd Hamburg Reprint. Printing of July 12, 1892. Smooth white paper. Head Type II. Perf. 14 x 14. Colors are green and carmine.



1 Pfennig - Scott #14

1st Berlin Reprint. Printing of March 2, 1882. Edition of 100,000 copies. Head Type II. Perf. 13 1/2 x 14 1/4. Colors are bright rosy flesh pink and bright deep green.



2nd Berlin Reprint. Printing of July 2, 1883. Edition of 200,000 copies. Head Type II. Perf. 13 1/2 x 14 1/4. Colors are dull flesh pink and deep bluish green.



1 Pfennig - Scott #14

Leipsig Reprint. Printing of March 9, 1888. Head Type II. White surfaced paper. Smooth gum. Perf. 13 1/2 x 14 1/4. Colors are dull brown rose and green.



1 Pfennig - Scott #14

1st Hamburg Reprint. Printing of January 31, 1891. Head Type II.
Smooth white paper. Perf. 14 x 14. Colors are pale brown red and
bright gray green.



2nd Hamburg Reprint. Printing of July 12, 1892. Smooth white
paper. Head Type II. Perf. 14 x 14. Colors are pale brown red
and green.



2 Pfennig - Scott #15

Berlin Reprint. There was only one reprint of this stamp made in Berlin. This was done on July 2, 1883. Edition of 100,000 copies. Head Type II. Perf. 13 1/2 x 14 1/4. The paper is yellowish but not as much so as the originals. Colors are dull green and carmine.



Leipzig Reprint. Printing of March 9, 1888. Head Type II. White surfaced paper. Smooth gum. Perf. 13 1/2 x 14 1/4. Colors are gray green and carmine.



2 Pfennig - Scott #15

1st Hamburg Reprint. Printing of January 31, 1891. Head Type II.
Smooth white paper. Perf. 14 x 14. Colors are dull gray green
and red to carmine red.



2nd Hamburg Reprint. Printing of July 12, 1892. Smooth white
paper. Perf. 14 x 14. Head Type II. Colors are gray green and
deep dull rose.



2 Pfennig - Scott #15

3rd Hamburg Reprint. Printing of July 19, 1893. Smooth white paper. Perf. 14 x 14. Head Type II. Colors are pale gray green and pale red.



Inverted Center

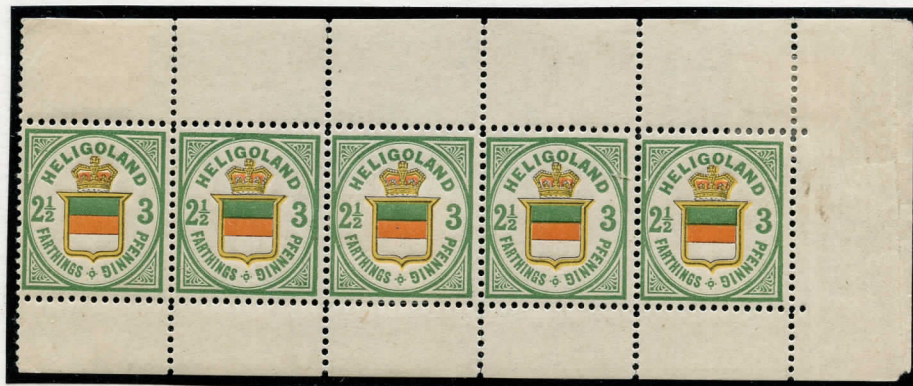
3 Pfennig - Scott #20

This stamp is another of the difficult stamps of Heligoland due to the close resemblance of the originals to the 1st Berlin Reprint and also to the 1st and 2nd Hamburg Reprints.

1st Berlin Reprint. Printing of June 6, 1880. Edition of 100,000 copies. Perf. 13 1/2 x 14 1/4. Colors are: yellow green; arms outlined in black; upper shield bar is deep green; middle bar is bright red and shield frame is light yellowish orange or light brownish orange.



2nd Berlin Reprint. Printing of January 23, 1885. Edition of 200,000 copies. Perf. 13 1/2 x 14 1/4. Colors are: light green to pale green; arms outlined in black; upper shield bar is light green; middle bar is orange and shield frame is pale yellow.



3 Pfennig - Scott #20

1st Hamburg Reprint. Printing of January 31, 1891. Thick yellowish wove paper. Perf. 14 x 14. Colors are; gray green; arms outlined in black; upper shield bar is light green; middle bar is dirty red and shield frame is lemon yellow.



2nd Hamburg Reprint. Printing of July 12, 1892. Thin white paper. Perf. 14 x 14. Colors are: bluish gray green; arms outlined in black; upper shield bar is deep green; middle bar is deep red; and shield frame is orange.



3rd Hamburg Reprint. Printing of July 19, 1893. White wove paper. Perf. 14 x 14. Colors are bluish green; arms outlined in black; upper shield bar is green; middle bar is orange and shield frame is lemon yellow.





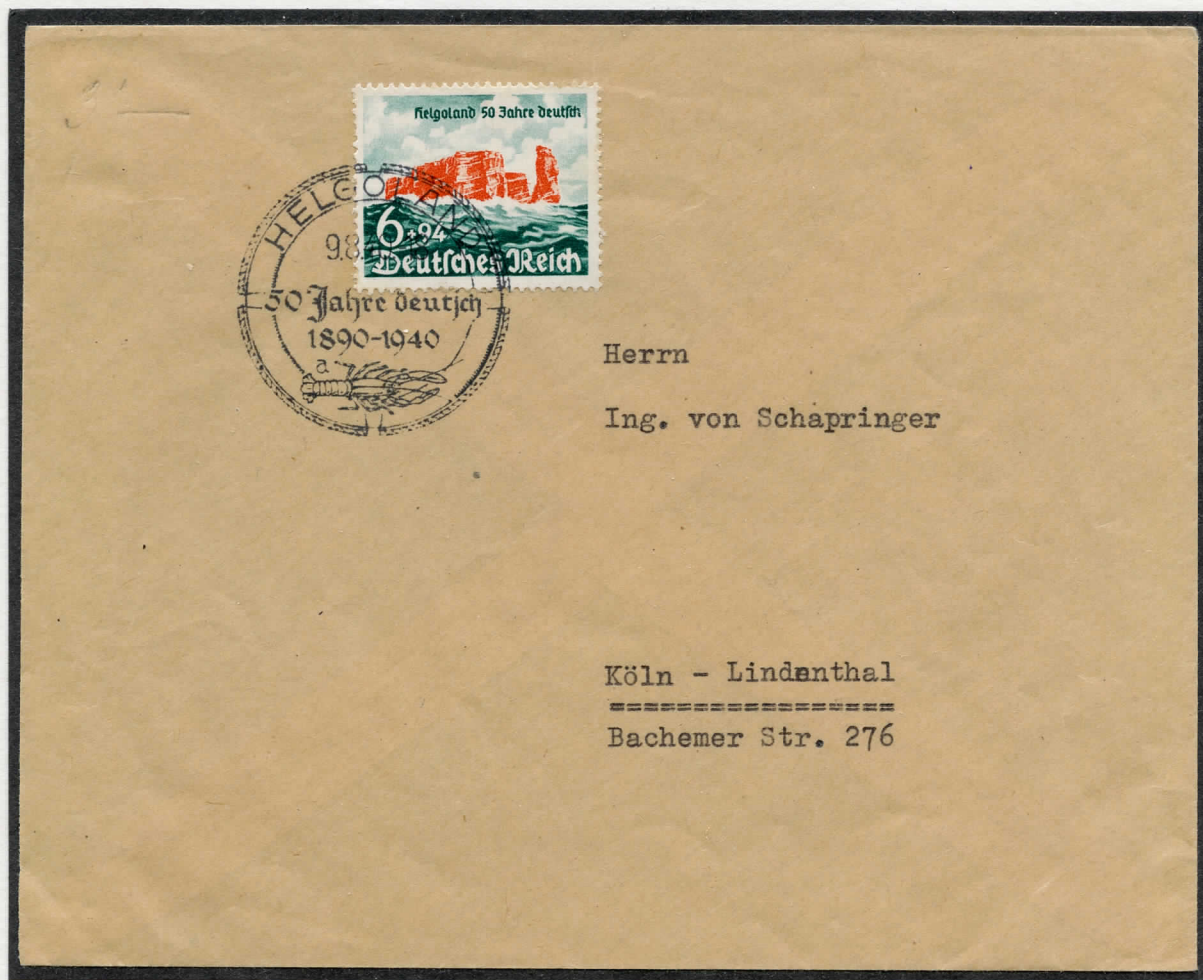
3 Pfennig - Scott #20 - 1st Hamburg Reprint



3 Pfennig - Scott #20 - 3rd Hamburg Reprint

FINALE

On August 9, 1940, Germany issued a semi-postal stamp (Scott #B176) in commemoration of Heligoland's 50th year as a part of Germany. This stamp shows the red rocky cliffs of Heligoland surrounded by a stormy sea.



Cover with special Heligoland first day of issue cancellation.

1 Schilling Rouletted - Scott #2 - 1st Berlin Reprint



1 Schilling Rouletted - Scott #2 - Leipzig Reprint



2 Schilling Rouletted - Scott #3 - Leipzig Reprint



2 Schilling Rouletted - Scott #3 - 1st Hamburg Reprint



2 Schilling Perforated - Scott #3 - 2nd Berlin Reprint



2 Schilling Perforated - Scott #3 - Leipzig Reprint



6 Schilling Rouletted - Scott #4 - Leipzig Reprint



6 Schilling Rouletted - Scott #4 - 3rd Hamburg Reprint



6 Schilling Perforated - Scott #4 - Leipzig Reprint



6 Schilling Perforated - Scott #4 - 2nd Berlin Reprint



1/2 Schilling Perforated - Scott #5 - Leipzig Reprint



1/2 Schilling Perforated - Scott #5 - 2nd Hamburg Reprint



1 Schilling Perforated - Scott #6 - Leipzig Reprint



1/4 Schilling - Scott #7 - Leipzig Reprint



1/4 Schilling - Scott #8 - 2nd Berlin Reprint



1/4 Schilling - Scott #8 - 3rd Berlin Reprint



1/4 Schilling - Scott #8 - Leipzig Reprint



1/4 Schilling - Scott #8 - 1st Hamburg Reprint



Lose
Heads

↑
Head
crooked

3/4 Schilling - Scott #10 - Leipzig Reprint



3/4 Schilling - Scott #10 - 1st Hamburg Reprint



Nick in medallion

1 1/2 Schilling - Scott #12 - Leipzig Reprint



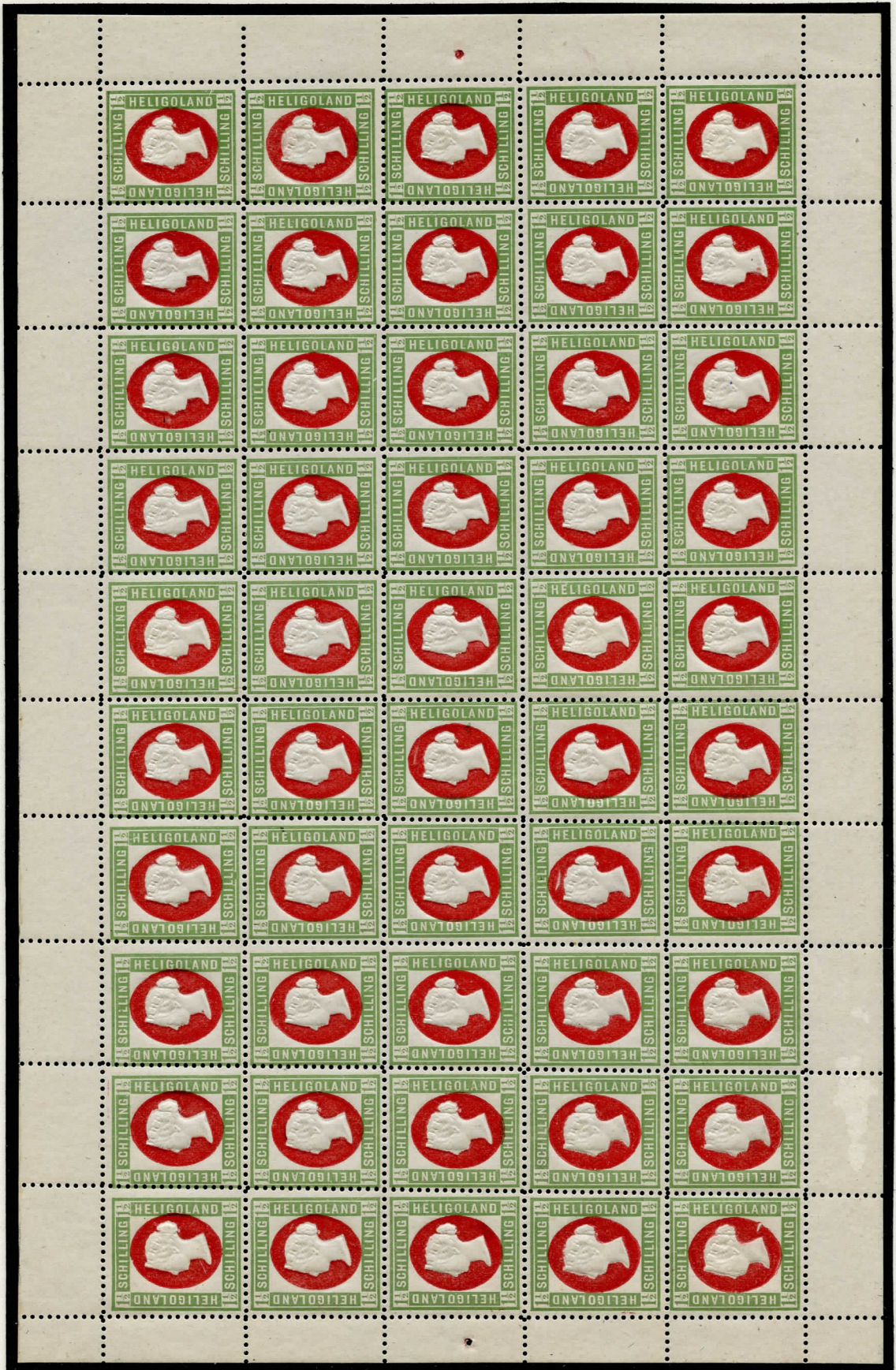
10/4240

Leipzig Reprint 9. 3. 1898

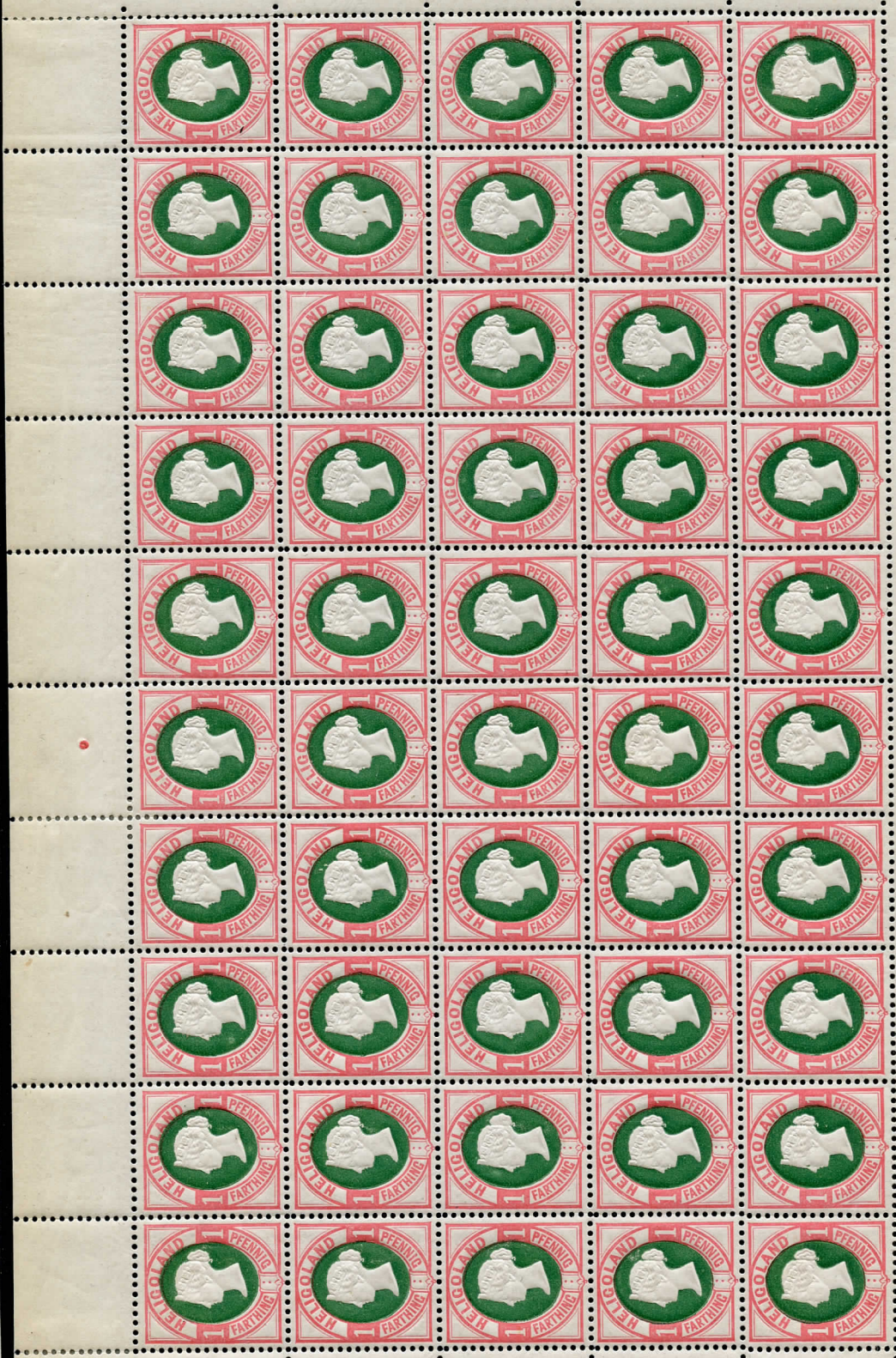
1 1/2 Schilling - Scott #12 - 1st Hamburg Reprint



1 1/2 Schilling - Scott #12 - 2nd Hamburg Reprint



1 Pfennig - Scott #14 - 1st Berlin Reprint

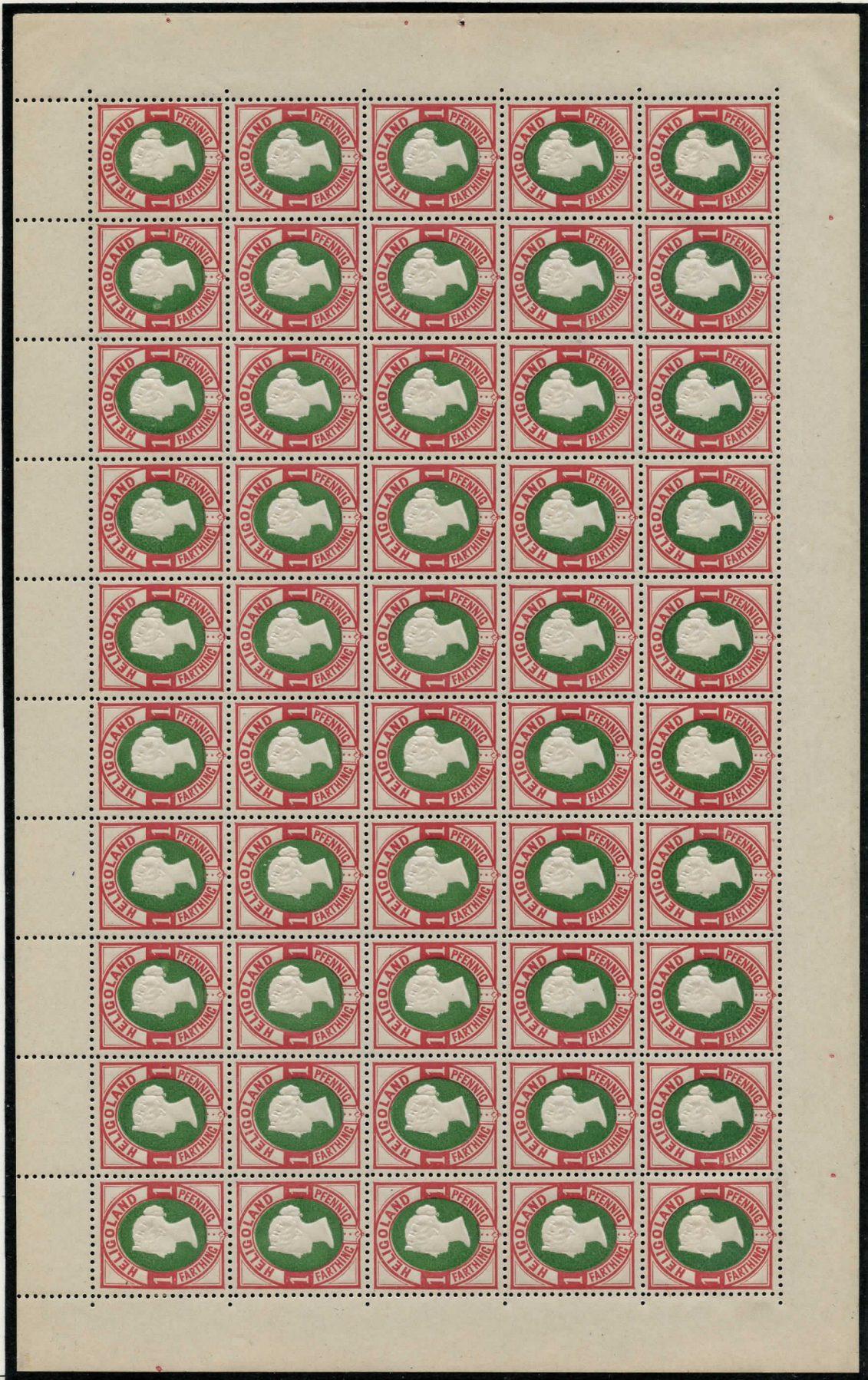


207



1 Pfennig - Scott #14 - 2nd Berlin Reprint

1 Pfennig - Scott #14 - Leipzig Reprint









Original - Scott #17

Leipzig Reprint - Scott #2





Leipzig Reprint - Scott #3



Leipzig Reprint - Scott #3



Leipzig Reprint - Scott #3

1000

1000

Leipzig Reprint - Scott #4





Leipzig Reprint - Scott #5

Leipzig Reprint - Scott #6





Leipzig Reprint - Scott #7

Leipzig Reprint 9/3/22

1/4265

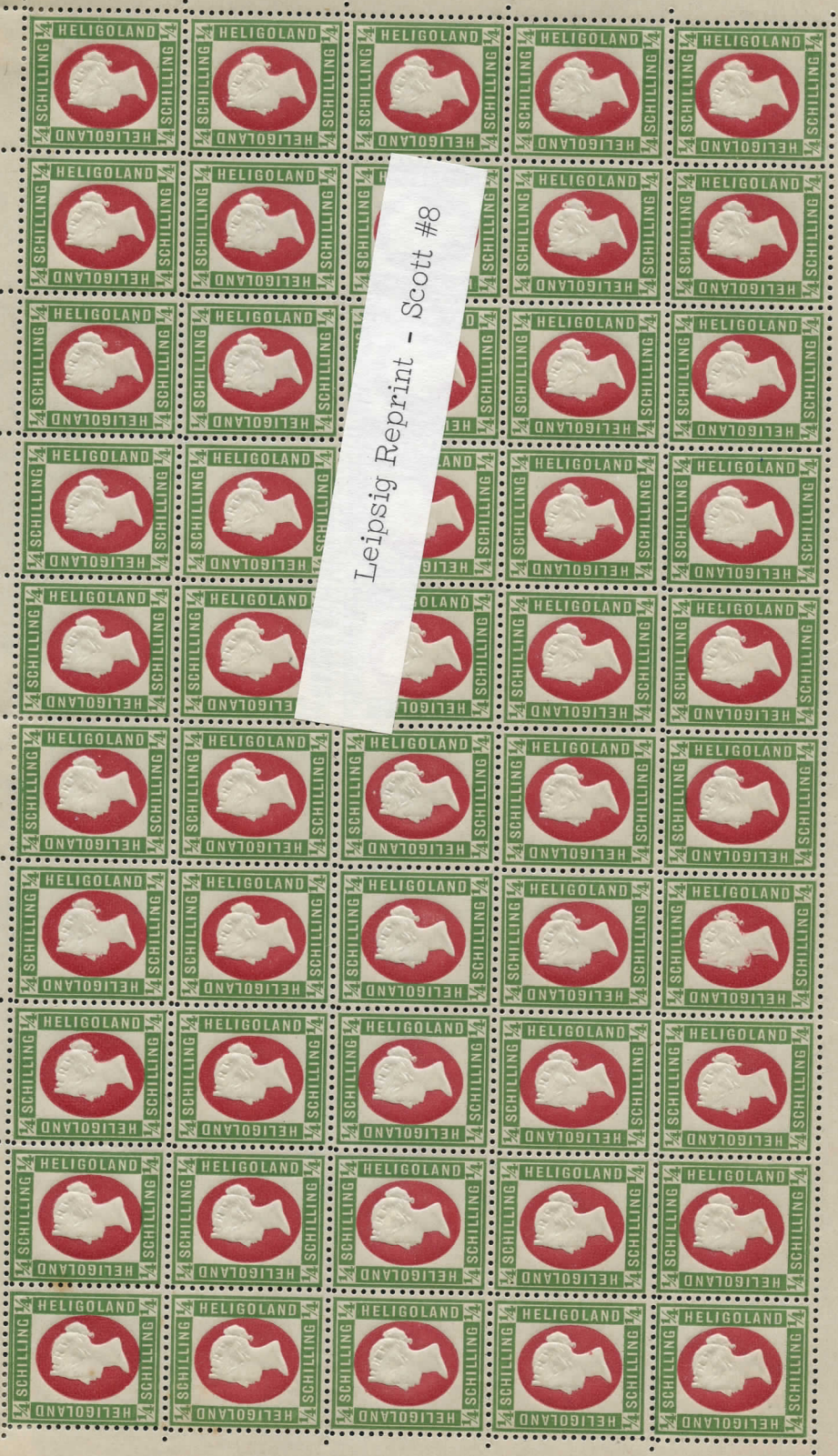


Leipzig Reprint - Scott #7

8/4266

Leipzig Reprint - Scott #8

Leipzig Reprint 9/3/88





Leipzig Reprint - Scott #8

100



Leipzig Reprint - Scott #8



Leipzig Reprint - Scott #8

9/4/68

Leipzig Reprint - Scott #10



Leipzig Reprint. 9.3.98.



Leipzig Reprint - Scott #10



Leipzig Reprint - Scott #8

Leipzig Reprint, 9/3/98.

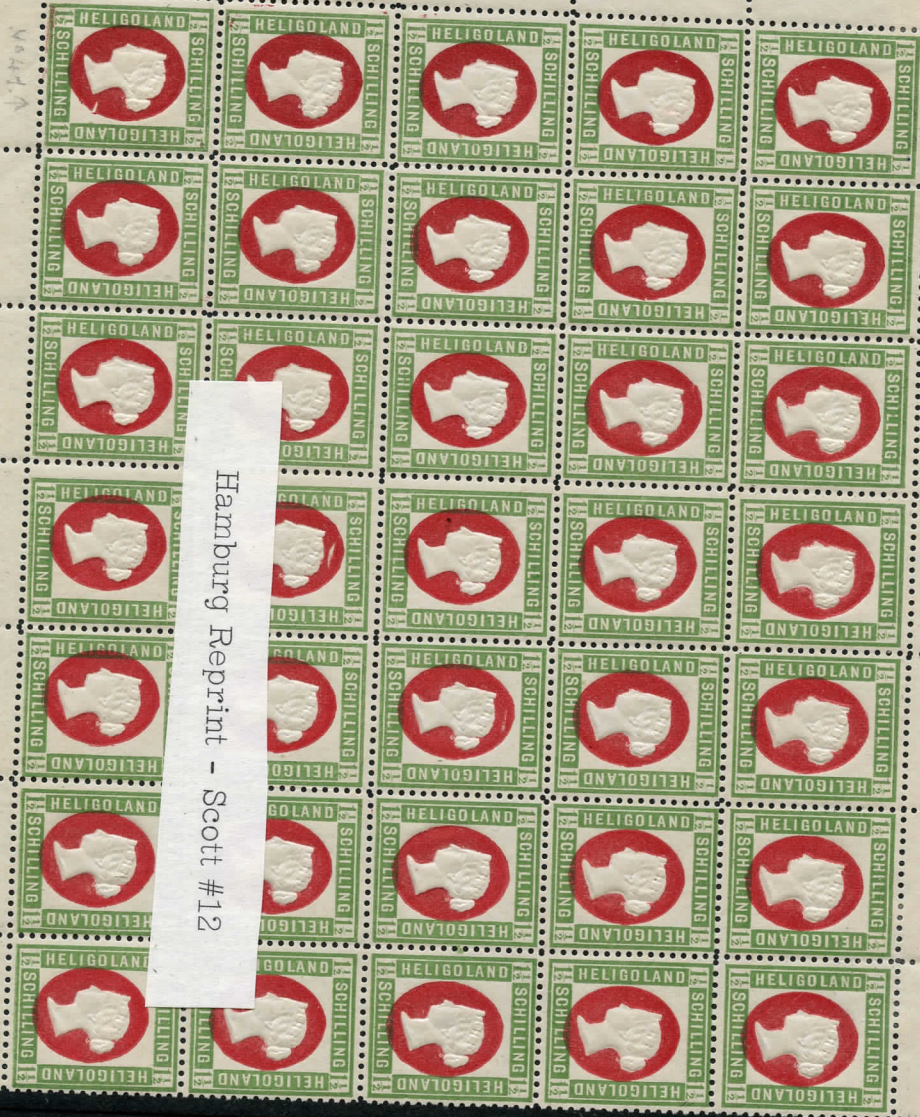
*Leipzig
Repr. Gm. 1888*



Leipzig Reprint - Scott #10



Leipsig Reprint - Scott #14



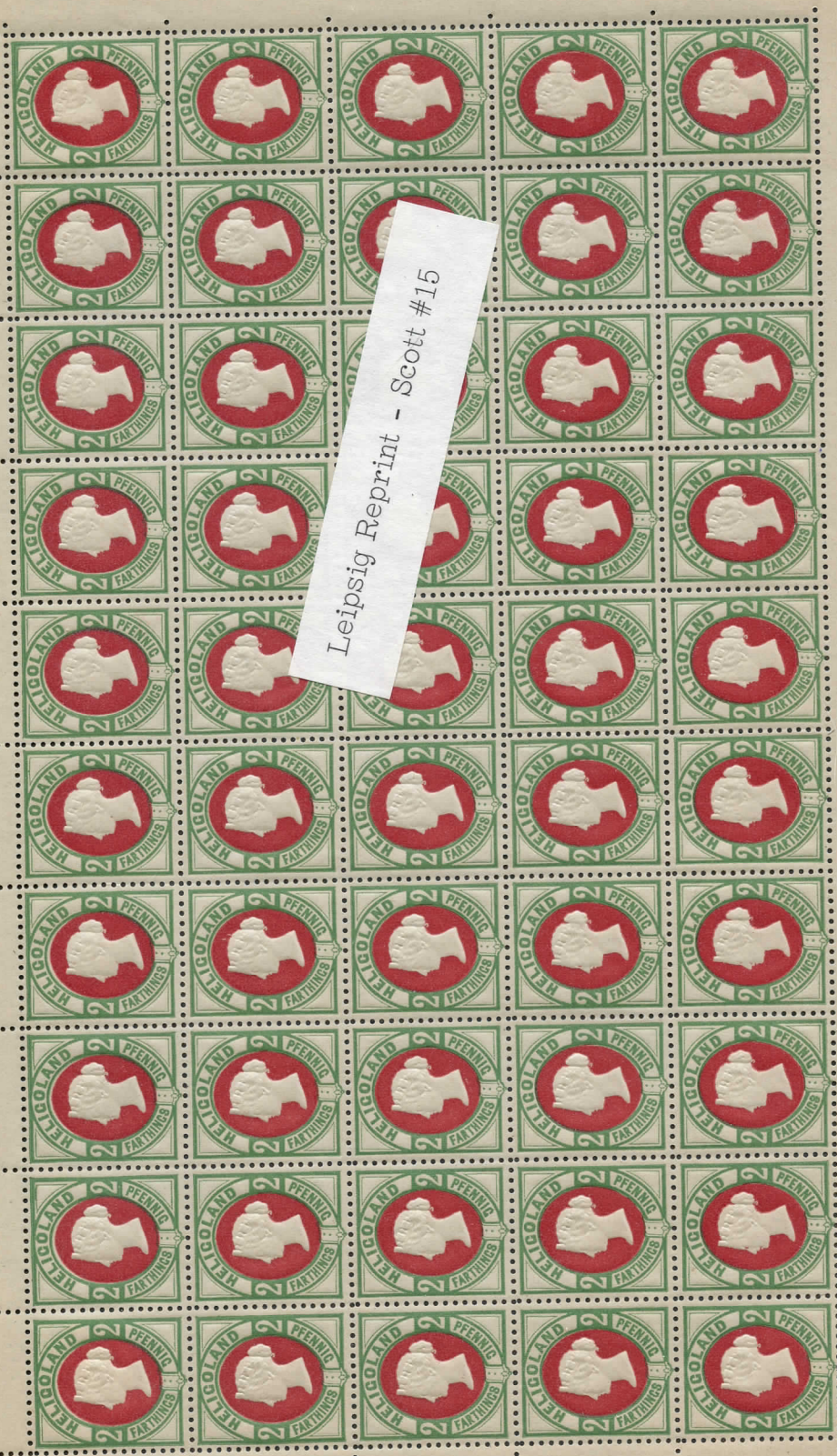
Hamburg Reprint - Scott #12

1444

N 3

1444

Leipzig Reprint - Scott #15





Reprint - Scott #15





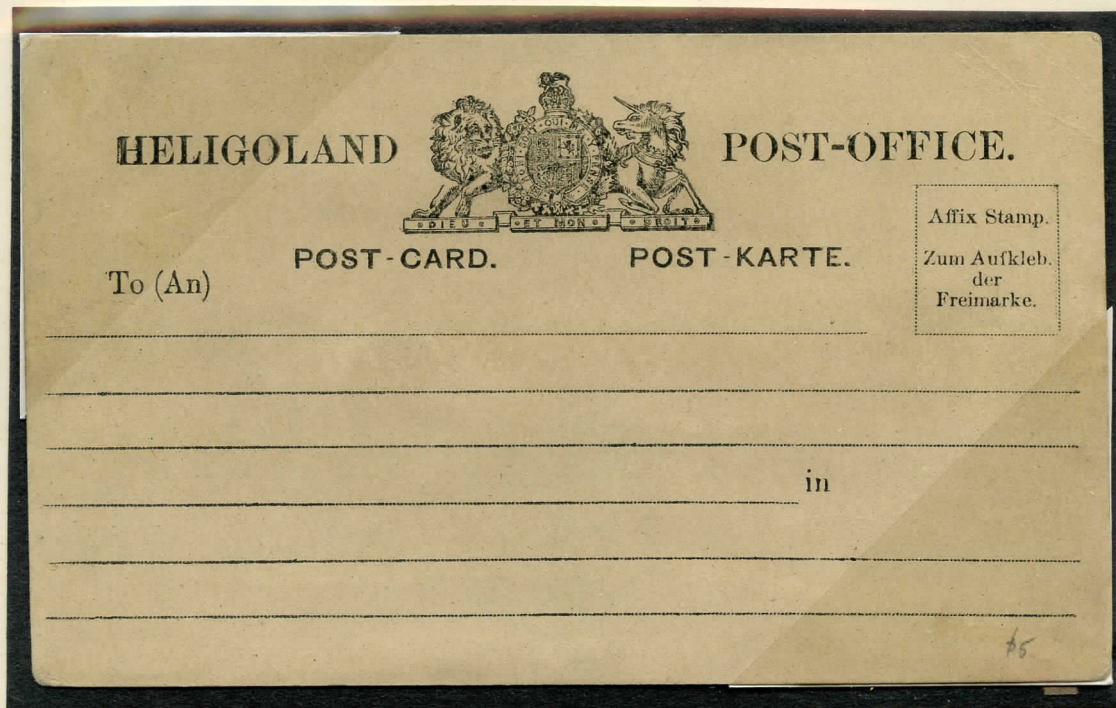
1st Berlin Reprint - Scott #14

POSTAL STATIONERY

Post Cards

As there was no printing office in Heligoland, the Government had the first post cards struck off by its own small printing press. There were several editions of these and they were printed one by one. The sale of these cards was extremely limited; not more than a few hundred copies were printed at a time.


Post Card No.1. Issue of September 13, 1873; locally printed, black on buff, 143 mm. x 89 mm., no impressed stamp.



An adhesive stamp was frequently affixed to the card before it was sold to the public.

POSTAL STATIONERY

Post Card No.2. Issue of November, 1873; locally printed, black on light brown, 143 mm. x 86 mm., no impressed stamp; same as No.1 except that the first and fourth lines of the address are omitted.

HELIGOLAND  POST-OFFICE.

To (An) POST-CARD. POST-KARTE.

Affix Stamp.
Zum Aufkleb.
der
Freimarke.

in

Post Card No.3. Issue of December, 1873; locally printed, black on light brown, 143 mm. x 86 mm., no impressed stamp; same as No. 2 except that a frame was added.

HELIGOLAND  POST-OFFICE.


To (An) POST-CARD. POST-KARTE.

Affix Stamp.
Zum Aufkleb.
der
Freimarke.

in

POSTAL STATIONERY

Post Card No. 4. Issue of October, 1874; printed at Cuxhaven, black on yellowish buff not surfaced, no impressed stamp, printed with a type which is different from that used before.

HELIGOLAND  POST-OFFICE.

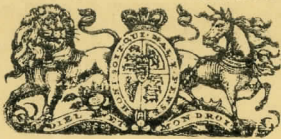
To (An) POST-CARD. POST-KARTE.

*To affix stamp.
Zum Aufkleben der Freimarke.*

in

4 1874

Post Card No. 5. Issue of November, 1874; printed at Cuxhaven, black on pale buff, thick and highly surfaced, no impressed stamp, type same as on Card No. 4.

HELIGOLAND  POST-OFFICE.

To (An) POST-CARD. POST-KARTE.

*To affix stamp.
Zum Aufkleben der Freimarke.*

in

5 1874

Post Card No. 6. Issue of April, 1875; stamp similar to that on the envelopes impressed in the upper right hand corner; printed at the Imperial Printing Office in Berlin. The stamp was engraved by Mr. Schilling and is struck in relief and in color.



There was only one edition of 100,000 copies and these were not all used; a portion, 10,300 copies, were converted to another value by means of a surcharge and 47,000 were sold in bulk as remainders.

Hamburg Reprint, Edition of December, 1879. Printed by Mr. Kumpel in Hamburg; the stamp part only was printed in sheets of ten (5 x 2) and then they were cut apart to make "cut squares"; color is pale yellow green.



POSTAL STATIONERY

Post Card No. 7. Issue of September 1, 1876; this is a paid - reply card. The two cards are joined at the top and have the impression on the first and third pages. The stamp is printed in relief and in deep yellow green on a buff card. A frame line was added to the design in order to make this double card easy to distinguish from the single card.



There was only one printing of 5000 copies, a small portion of which were used in 1879 for conversion into 10 plus 10 pfennig cards, while the rest were sold in bulk as remainders.

Hamburg Reprints. There were three reprints of this card made in Hamburg; Edition of December, 1879; edition of 1885; edition of July, 1892. The first and the third editions were reprints of the stamp corner of the card while the second was of the whole card. In each edition the border or frame is different.



December 1879



Edition of 1885

POSTAL STATIONERY

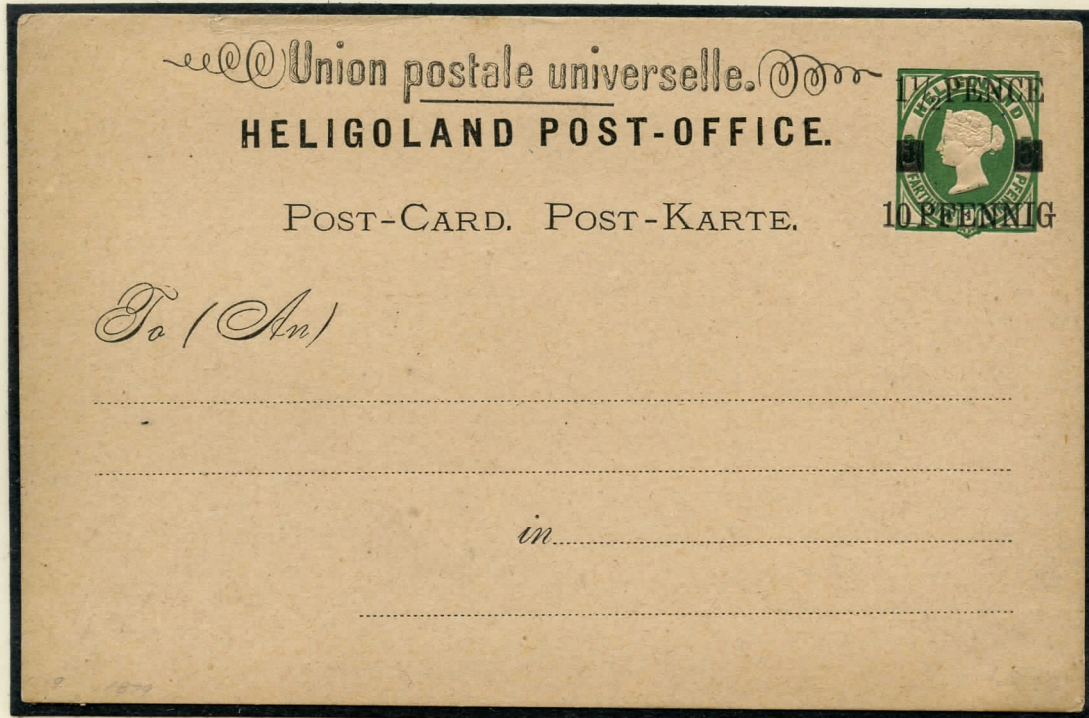
Post Card No. 8. Issue of April 1, 1878; completely new design, 10 pf. printed in black on white card. The design was engraved on copper by Alwin Schiffner and the printing was done at the Imperial Printing Office in Berlin. This is a rather scarce card since only 5000 copies were printed.



It was originally intended to print this card in two colors but due to the extra cost, it was decided to use only black. This card can be easily distinguished from Card No. 11 by its larger and heavier type and by the position of "Foreign Post Card" with relation to "Heligoland".

POSTAL STATIONERY

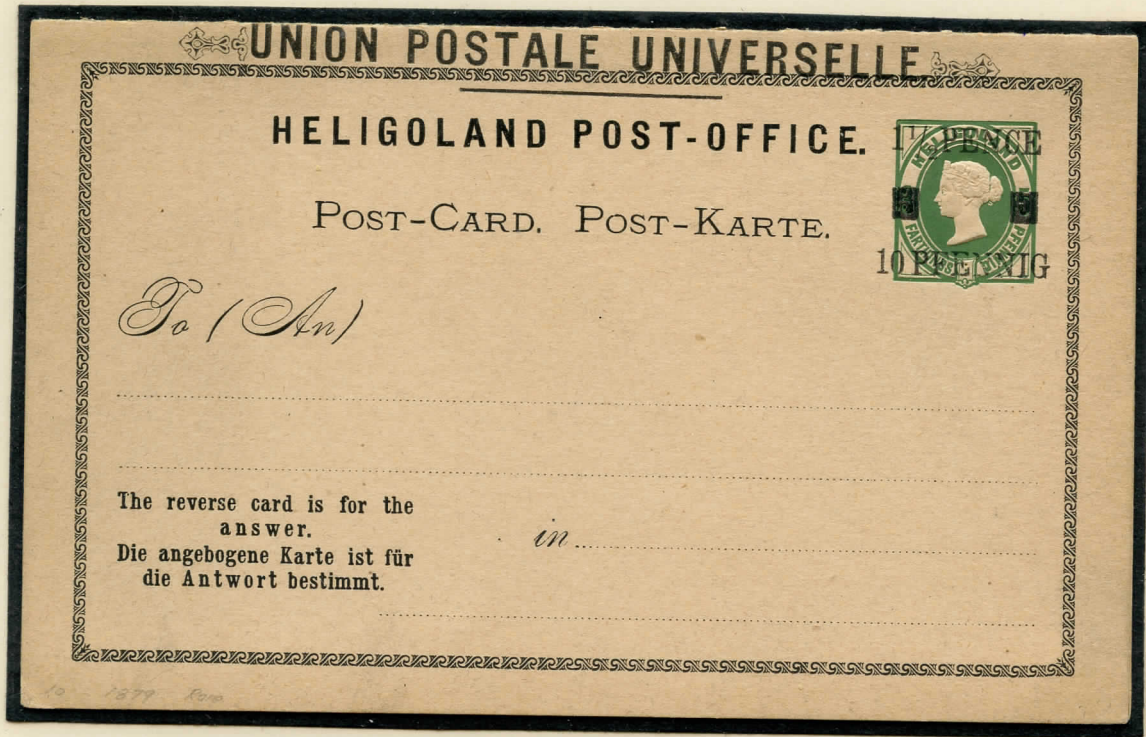
Post Card No. 9. Issue of July and August, 1879; on joining the Universal Postal Union in 1879, the postal administration found itself obliged to issue provisional cards to agree with the new rate, pending the preparation of a permanent issue. The 5 pf. card was used and its value was doubled by means of a surcharge. There are three different types of this surcharge.



The total number printed of this card was 10,300 copies; there were two printings, one being in July 1879 and the other on August 7, 1879 which printing produced two types because two presses were used to speed up the work.

POSTAL STATIONERY

Post Card No. 10. Issue of August 10, 1879. When Heligoland joined the Universal Postal Union and the regular cards were surcharged to take care of the new rate, a small quantity of the double cards were also surcharged. According to the records of the Postal Department only 700 copies were surcharged and therefore this is the rarest of the cards.



There are three varieties of this surcharge and this seems to have been caused by the fact that the printer neglected to tighten up the form and the type slipped and was retightened.

POSTAL STATIONERY

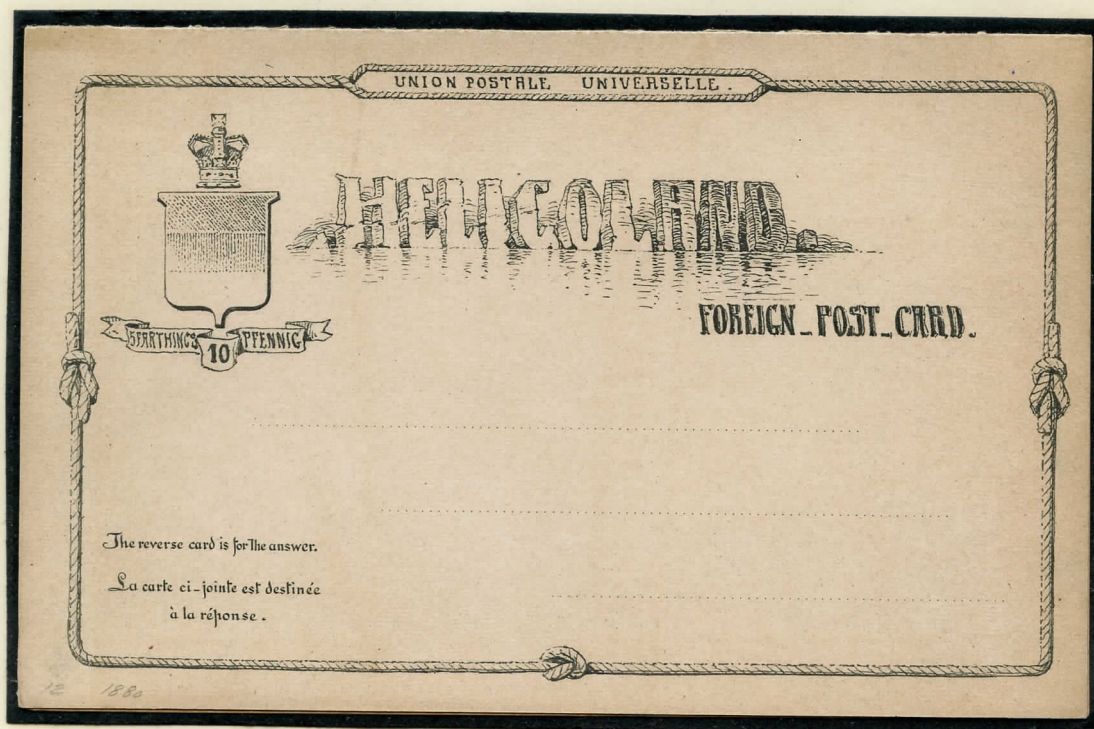
Post Card No. 11. Issue of October 22, 1879. The design resembles that of the issue of 1878 but the type is smaller and not as heavy; also the arrangement of the design varies to a certain extent and "Union Postale Universelle" has been added at the top. It was engraved by Mr. Alwin Schiffner and printed in black.



There were thirteen different printings of this card between August 1879 and May 1890 and the total number printed amounted to 320,300 copies.

POSTAL STATIONERY

Post Card No. 12. Issue of June 26, 1880. Similar to the card of Oct. 1879, this is a double Paid-Reply card. The impression is in black on the first and third pages. The card is grayish white. There were two printings; one of 5000 copies in June of 1880 and another of 2000 copies which did not reach Heligoland until August 16, 1890 after the English Post Office had been closed.



The copper plate of the single card of 1879 was employed for the production of this card, with the addition of the necessary inscriptions.

POSTAL STATIONERY

Envelope No. 1

Embossed profile to the left of Queen Victoria, type of the 10 pfennig adhesive of 1875, but with the frame re-engraved and differing, therefore, slightly in the details. Engraved on steel by M. Schilling and printed in the right upper corner of the envelopes of white wove paper. There is also an embossed circular design on the back flap. The color is carmine.

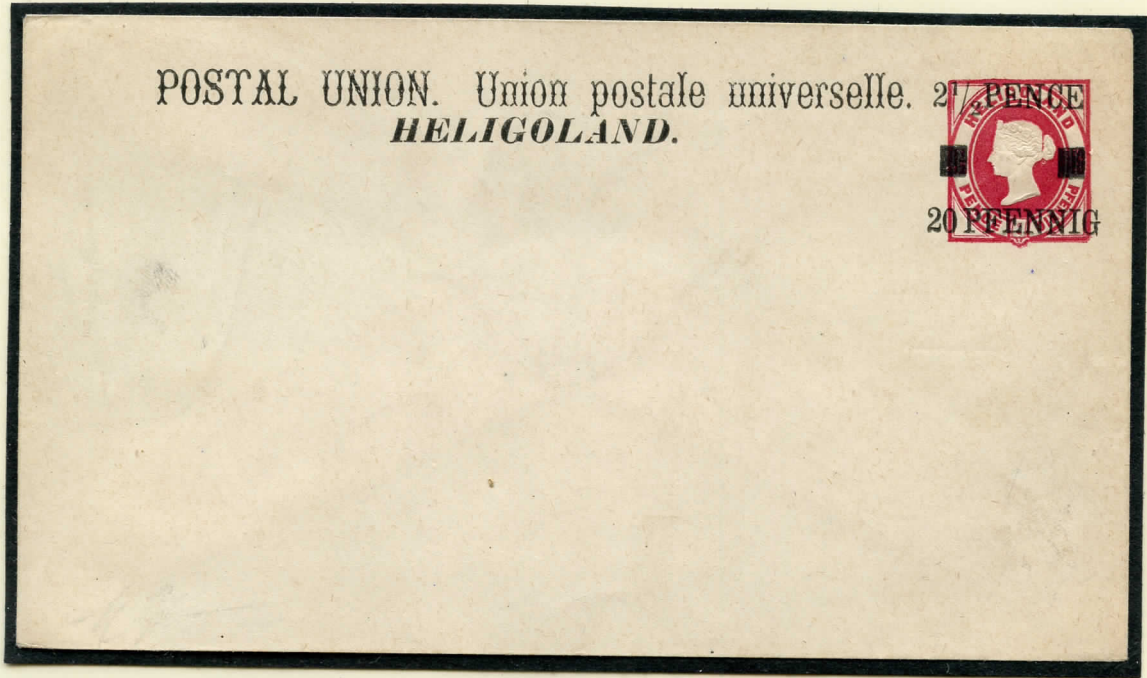


This is the printing of April 13, 1875 which was 100,000 copies; of these 18,300 were sold to the public; 68,700 were remainders and were sold to Mr. Goldner of reprint fame; and 13,000 were surcharged to conform to the new Universal Postal Union rate.

POSTAL STATIONERY

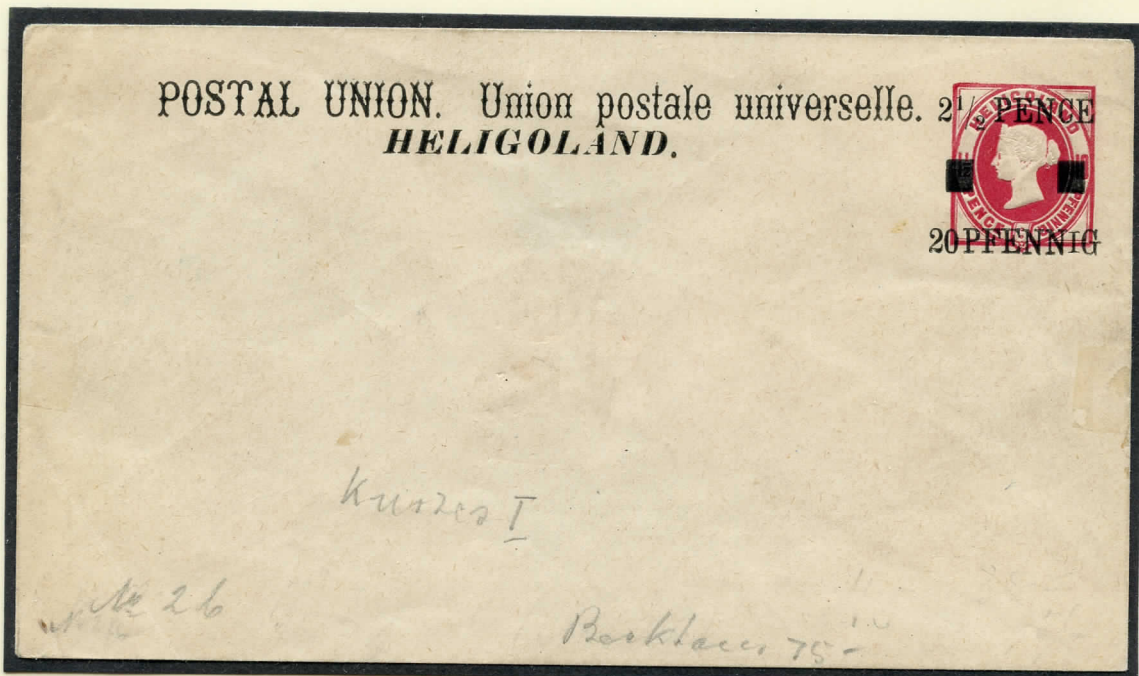
Envelope No. 2. When Heligoland joined the Universal Postal Union in 1879, a new envelope value was needed and so existing envelopes were surcharged to conform to the new rate. This was done in two printings.

Printing of July 29, 1879. This printing consisted of 13,000 copies.



#B2

Printing of June 21, 1881. This printing consisted of 3,000 copies. It is distinguished from the first by a slightly different position of the word "Heligoland" under the upper line of printing and by a short "I" in Pfennig.



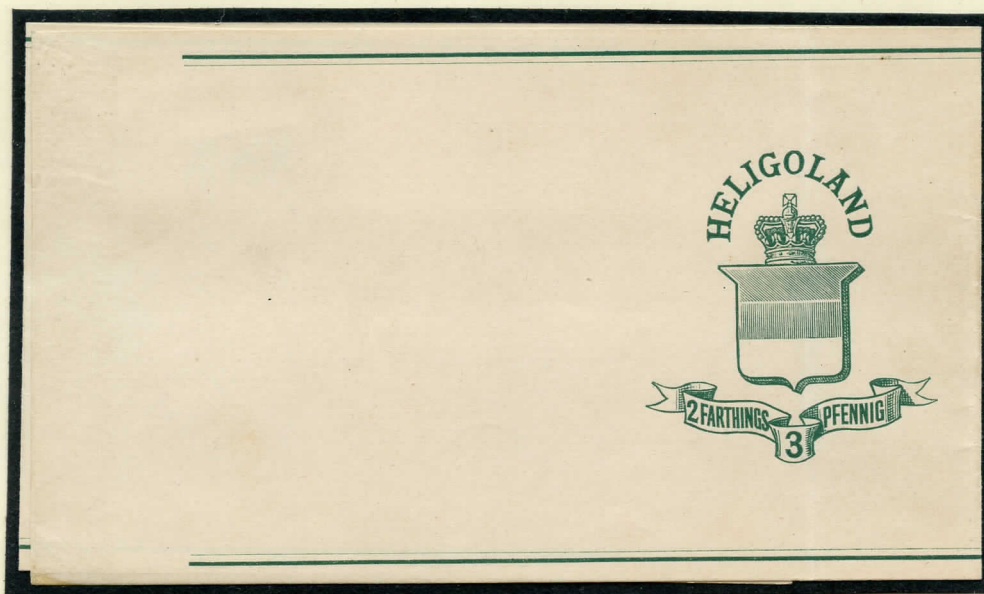
#B2a

POSTAL STATIONERY

WRAPPERS

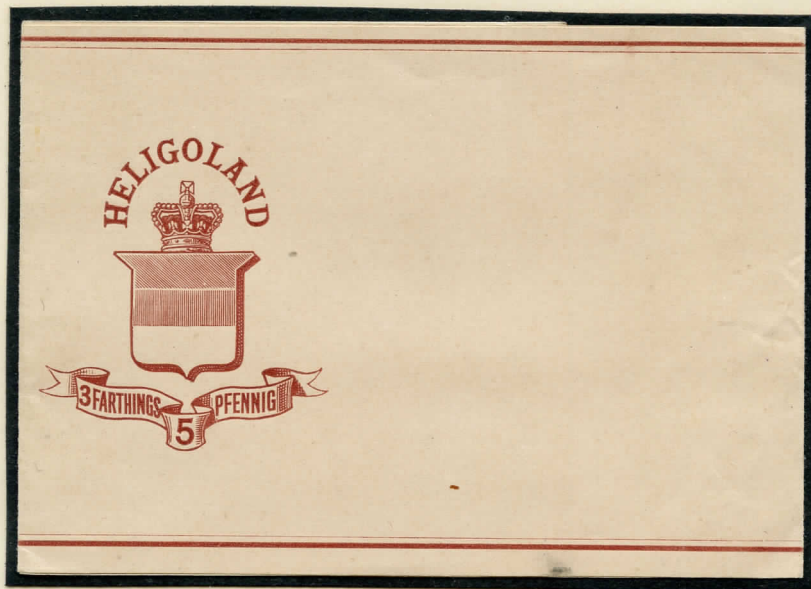
To supply the demands of the public, the Post Office Department decided to issue stamped wrappers. The first order was sent to Berlin accompanied by a design, the handiwork of Mr. Gatke, the Secretary to the Government, on December 8, 1877. There was no question at that time of other values than 3 and 5 pfennig.

Wrapper No. 1. There were two printings of this wrapper, 5,000 on February 13, 1878 and 10,000 in May, 1878.

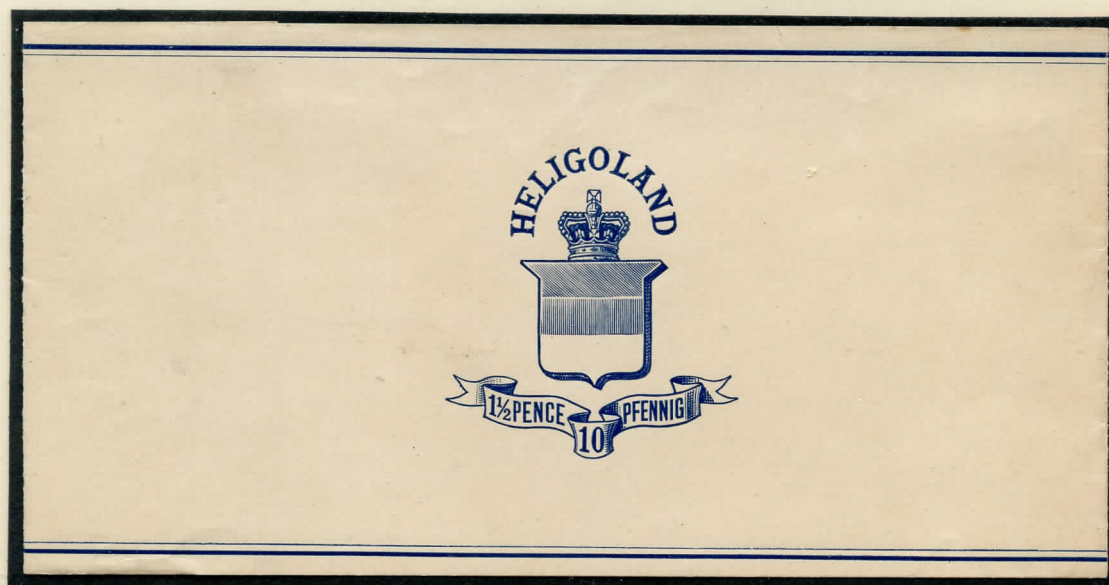


POSTAL STATIONERY

Wrapper No. 2. There were five different printings of the 5 Pfennig wrapper each consisting of 5000 copies making a total of 25,000.



Wrapper No. 3. This is the scarcest of the wrappers, there being only one edition of 5,000 copies printed in April of 1878.



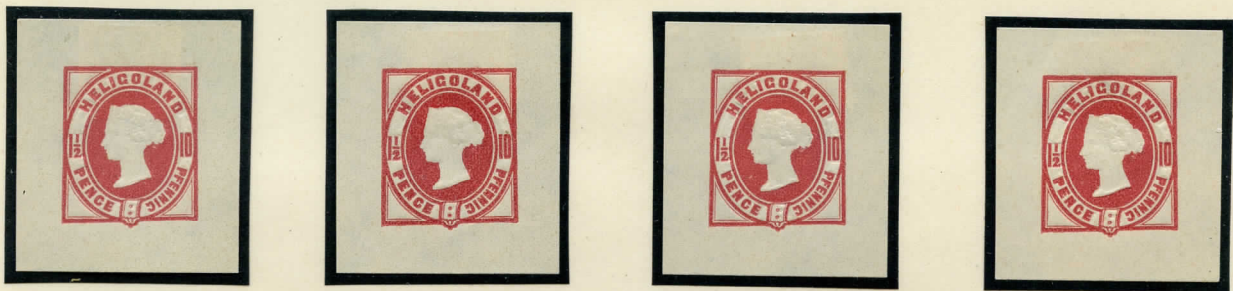
POSTAL STATIONERY

Reprints of Envelope No. 1

Printing of December, 1879. The die was purchased by Mr. Goldner from the Heligoland Government and he had this first reprint printed by the firm of A. Kumpel of Hamburg. These were struck upon sheets and afterwards were cut square (as were the other two printings). The paper is plain, white wove paper; the color is rose.



Printing of March 9, 1893. Printed by Mr. Schlotke of Hamburg - pale rose on thin white paper.



Printing of March 20, 1895. Printed by Mr. Schlotke of Hamburg - brownish rose on white wove paper.



REPRINTS

Wrapper No. 1. There were several different printings all done in Hamburg. They all have a rough appearance which makes them easy to recognize, particularly when compared with an original.



REPRINTS

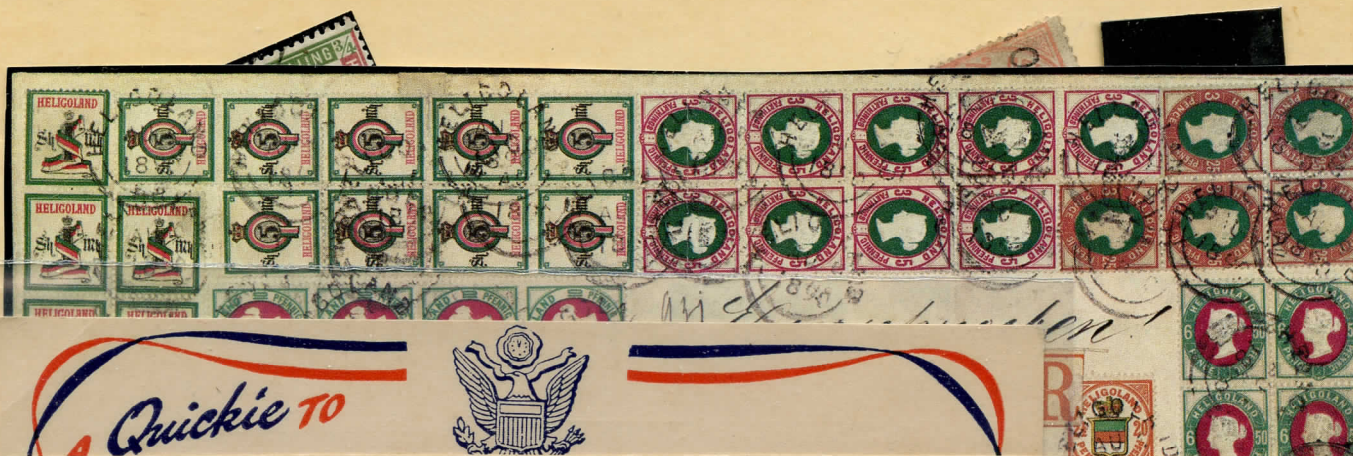
When Mr. Goldner purchased in September 1879 the stock of Heligoland stamps, with the various dies and blocks, he appears to have considered himself authorized to reproduce by lithography the 5 and 10 pfennig wrappers, making use for that purpose of the design of the 3 pfennig of which he possessed the blocks.

Wrapper No. 2. These were also printed in Hamburg and due to the printing process have a rough appearance.



Wrapper No. 3. The 10 pfennig wrapper was printed in Hamburg under the same conditions as Wrapper No. 2.





SCOTT #10



Original



Leipzig
Reprint



End Berlin
Reprint



3rd Berlin
Reprint



1st Hamburg
Reprint



UNION POSTALE UNIVERSELLE

HELIGOLAND



UNION POSTALE UNIVERSELLE

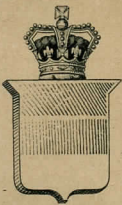


HELIGOLAND
AUG 3
1887

UNION POSTALE UNIVERSELLE



HELIGOLAND
AUG 29
1887
CARD.



HELIGOLAND

FOREIGN POST CARD.

5 FARTHINGS 10 PFENNIG

1887



9.

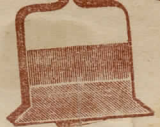
UNION POSTALE UNIVERSELLE



HELIGOLAND
SEP 19
1887
FOREIGN POST CARD

HELIGOLAND

5 FARTHINGS 10 PFENNIG



HELIGOLAND



HELIGOLAND



HELIGOLAND
w/ Reply CARD
65⁰⁰

UNION POSTALE VERSELLE

HELIGOLAND POST-OFFICE.

POST-CARD. POST-KARTE.



To (An)
Herrn Wolfgang Meyer

HELIGOLAND
1890

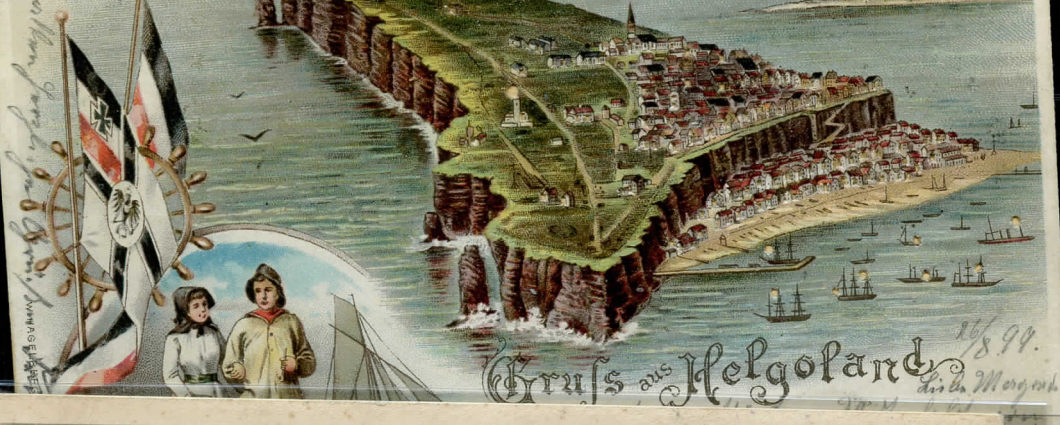


7⁰⁰
PROOF



7⁰⁰
PROOF

15⁰⁰
ESSAY



Helgoland vom Meere aus.

Grün ist das Land,
Rot ist die Kant,

Weiss ist der Strand,
Das sind die Farben von Helgoland.

Helgoland.

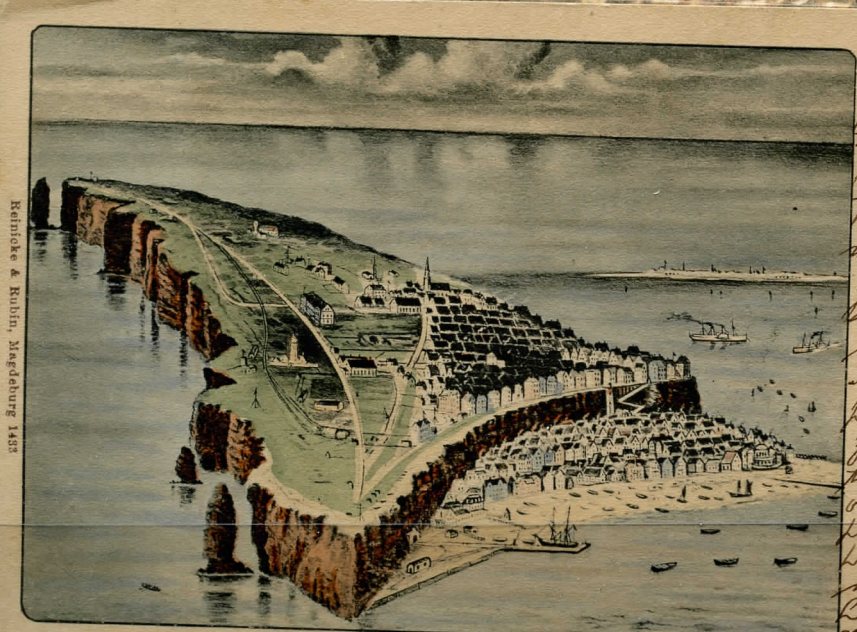


HELIGOLAND  **POST-OFFICE.**

To (An) **POST-CARD.** **POST-KARTE.**

Affix Stamp.
Zum Aufkleb.
der
Freimarke.

in



Vogelschau

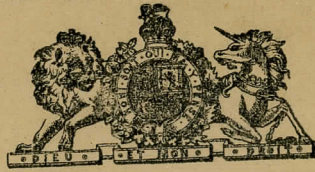
3/5. 1903.
Helgoland
Dobryj go pl.
lohled, zasylam
vam z vyhled
na Krásky Hle
goland pulhad.
viri si. Lohem
se zde Lohem.
To pem, in pody
hial ga melho
zivolapabriti
ten vgaeny
ontoor, kiz pem
longil probi
hri lozibati a
nastitil pem
li. Puro avem
of stal'feh v ppa

mined N. Hanzl



PIONEER POSTCARD 1897
FROM HELGOLAND.
USED 1897

HELIGOLAND



POST-OFFICE.

To (An)

POST - CARD.

POST - KARTE.

Affix Stamp.
Zum Aufkleb.
der
Freimarke.

in

HELIGOLAND



POST-OFFICE.

To (An)

POST - CARD.

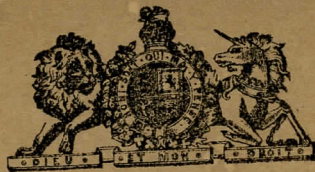
POST - KARTE.

Affix Stamp.
Zum Aufkleb.
der
Freimarke.

in

2 CARDS
\$10

HELIGOLAND



POST-OFFICE.

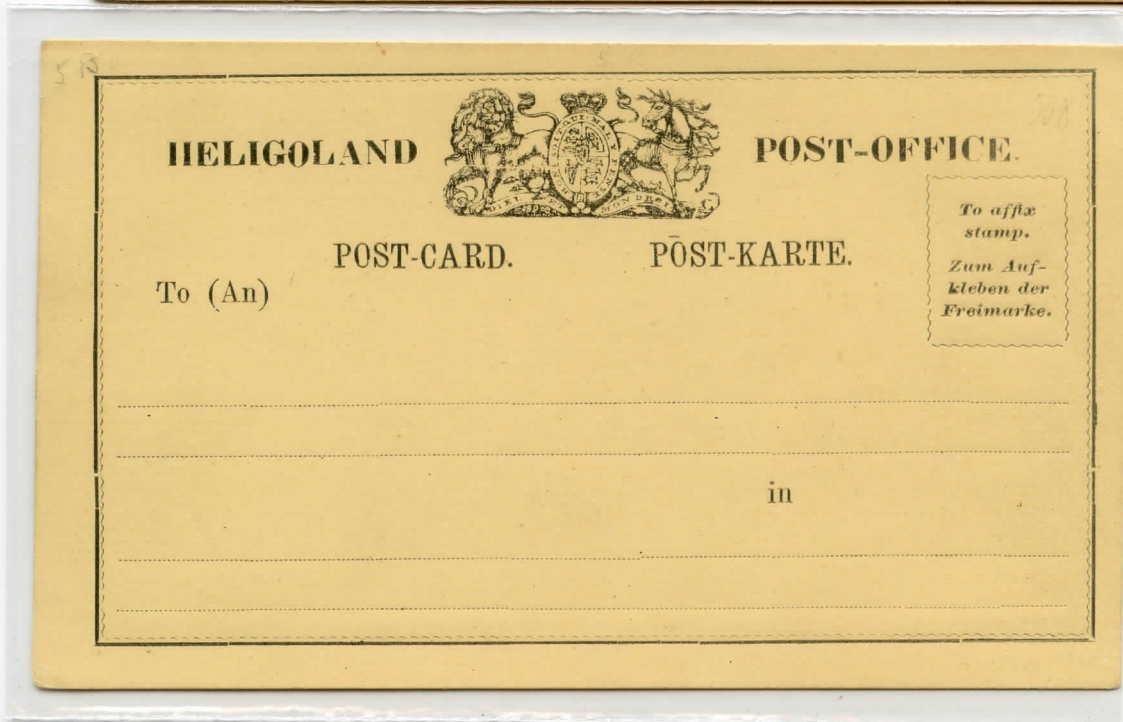
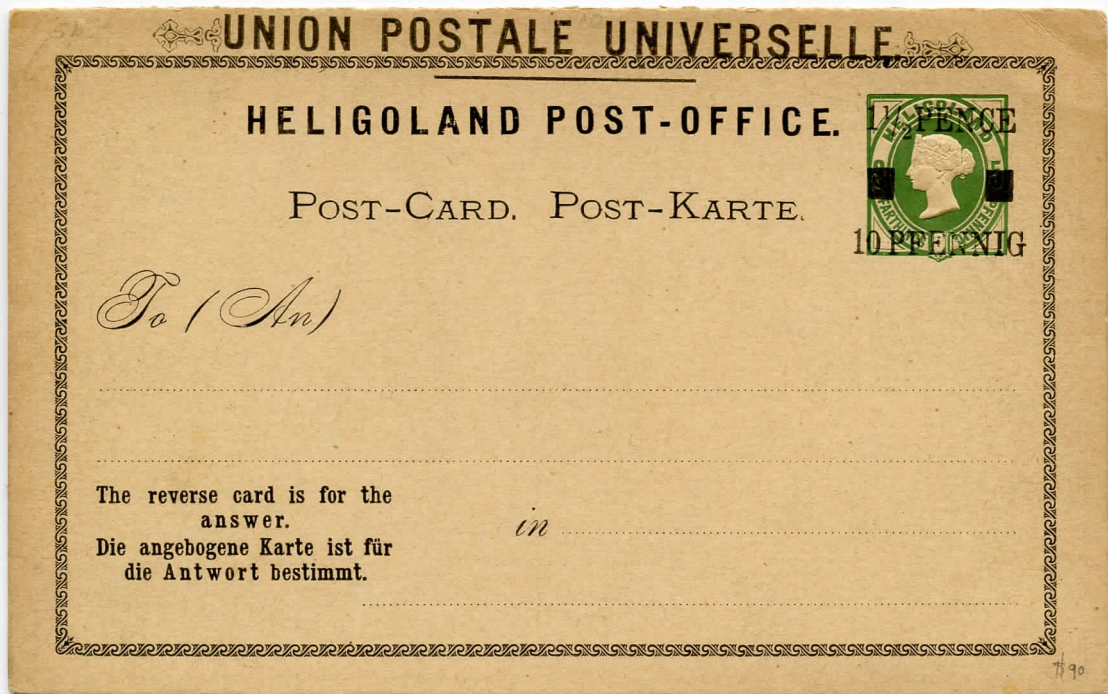
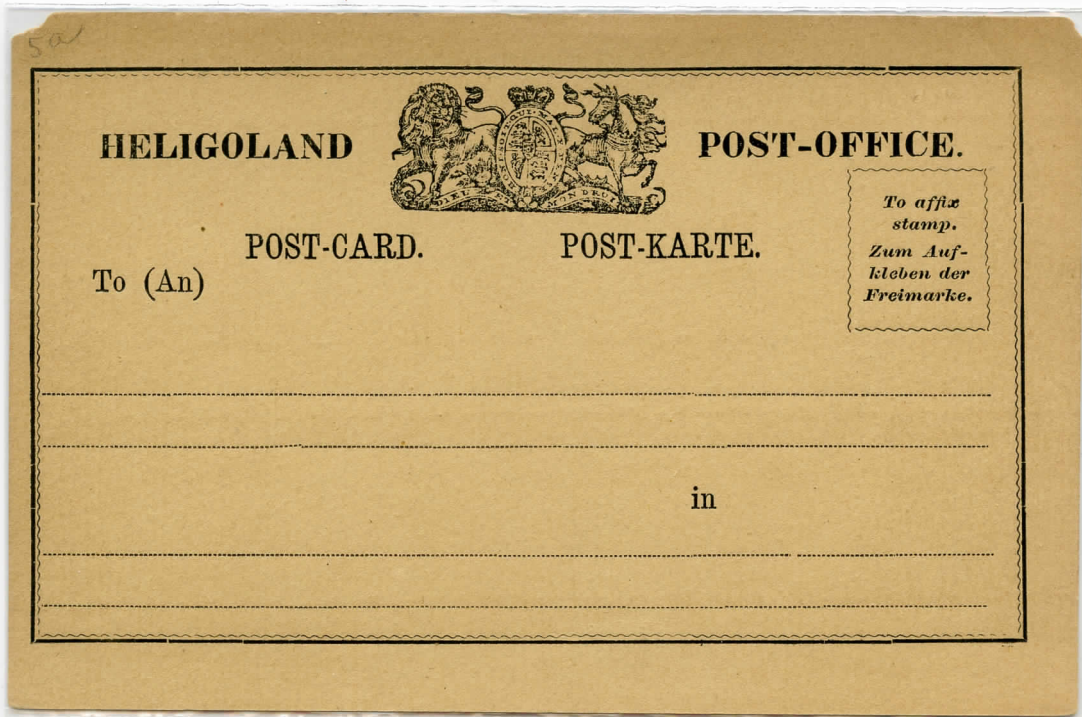
To (An)

POST - CARD.

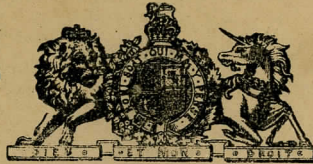
POST - KARTE.

Affix Stamp.
Zum Aufkleb.
der
Freimarke.

in



HELIGOLAND



POST-OFFICE.

To (An)

POST - CARD.

POST - KARTE.

Affix Stamp.
Zum Aufkleb.
der
Freimarke.

in

45

HELIGOLAND



POST-OFFICE.

To (An)

POST - CARD.

POST - KARTE.

Affix Stamp.
Zum Aufkleb.
der
Freimarke.

in

HELIGOLAND



POST-OFFICE.

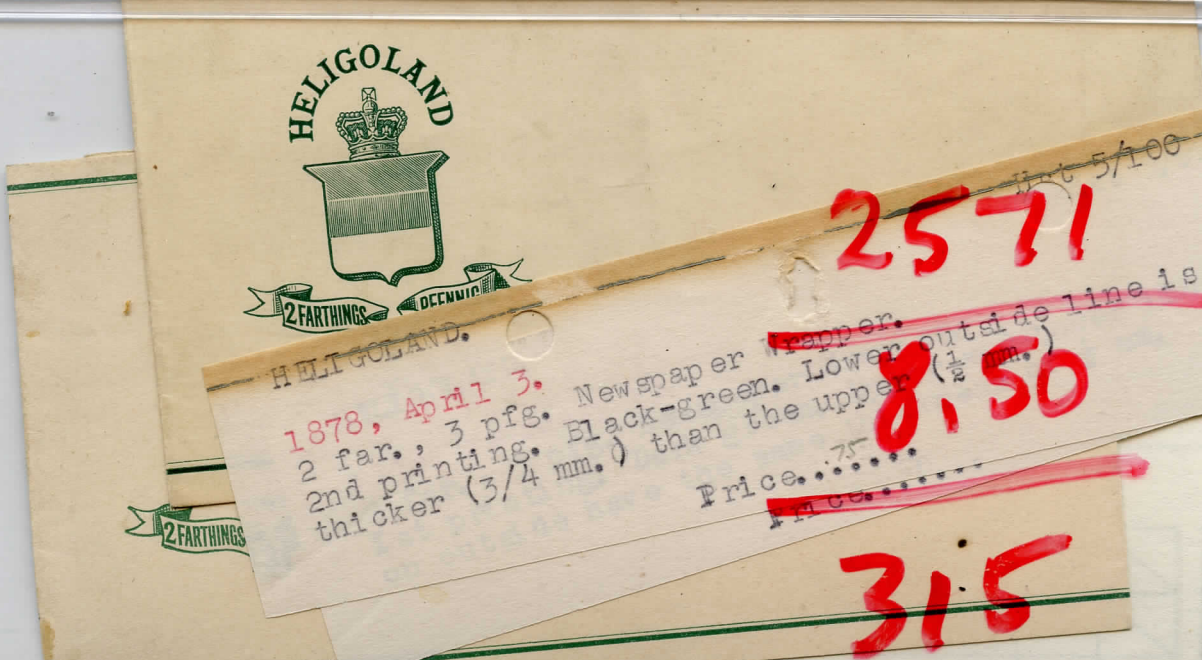
To (An)

POST - CARD.

POST - KARTE.

Affix Stamp.
Zum Aufkleb.
der
Freimarke.

in



HELGOLAND.

Hst 5/64

COUNTERFEITS of the stamped envelope of the 1875 issue.

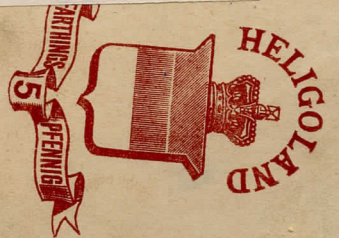
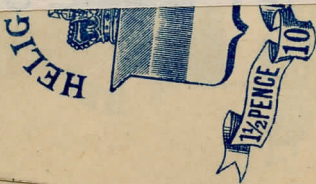
These cut squares were not from entires, but were printed on square pieces of paper of any color that happened to be on hand.

HELGOLAND.

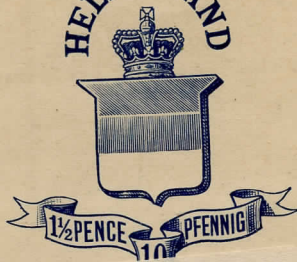
Hst 5/108

Counterfeits of the 1½d. 10 pfg. Newspaper Wrapper.

Price.....



HELGOLAND



Hst 5/106

HELGOLAND

HELGOLAND.

1890, Aug
1½d., 10
2nd print
thickness
of 1878.

1878, April.
1½d., 10 pfg. Newspaper Wrapper.
1st printing. Upper heavy line 3/4 mm. thick,
lower heavy line 1/2 mm thick.
Dark blue.
5,000 printed.

Price.....75

HELIGOLAND POST-OFFICE.

POST-CARD. POST-KARTE.



To (Am)

H&G #1a. - albino
very rare.



715

